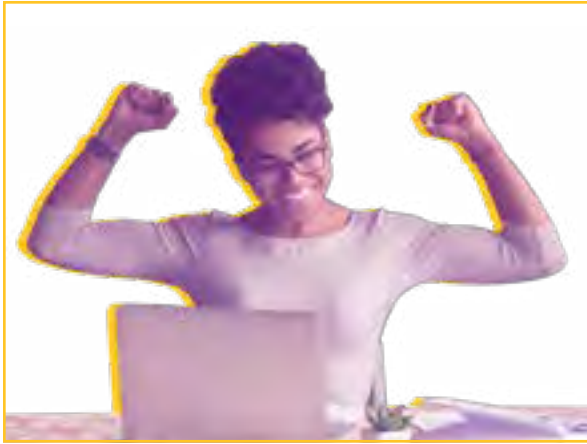


# INSTRUCTIONAL LEADERSHIP EDUCATIONAL SPECIALIST



The **ONLINE Educational Specialist Program in Instructional Leadership** is for educators who have earned a Class A Certification in Instructional Leadership or Educational Administration and wish to continue their education.

UM's Instructional Leadership Ed.S. is designed to prepare transformative leaders that are committed to educational quality, equity and inclusivity, through effective leadership strategies supported by research-based inquiry, analysis of current trends and the implementation of school improvement.

The program leads to a Class AA professional educator's certification in Instructional Leadership.

## COURSEWORK OVERVIEW

All coursework must be completed with a minimum overall GPA of 3.5.

**SPED 507** required if not previously completed.

### Core Courses (21 hours required)

- EDL 605** Adv. Fiscal & Organizational Management for Instructional Leadership (3)
- EDL 606** Leading Learning through Mentoring and Professional Development (3)
- EDL 612** Strengthening Community Relations through Restorative Leadership (3)
- EDL 640** Strategic Planning & Analysis for Current & Evolving Issues in Educational Contexts (3)
- EDL 645** Data Driven Models for Curriculum Development & Assessment (3)
- EDL 648** Leadership for Equity and Social Justice (3)
- EDL 644** Legal & Ethical Dimensions of Instructional Leadership (3)

### Support Course (3 hours required)

- ED 621** Instructional Technology Leadership and Management (3)

### Action Research Project (6 hours required)

- EDL 650** Systemic Planning & Design for School Improvement (3)
- EDL 651** Systemic Evaluation of School Improvement (3)

**Please note:** This is not an official degree checksheet and is for general information purposes only.



## ADMISSION REQUIREMENTS

- Online application at [montevallo.edu/apply](https://montevallo.edu/apply)
- Graduate degree (minimum 3.0 GPA) from a regionally accredited college/university\*

**ONE of the following criteria must be met** (as defined by the Alabama State Department of Education):

- Alabama Class A professional educator's certificate in Instructional Leadership\*
- Current school/district administrator in a P-12 setting
- Documentation of three years of experience in an administrative position in a P-12 setting\*

\*Candidates who have not completed an ALSDE-approved, redesigned Class A IL Program (usually prior to 2010) must pass an interview conducted by a program admission committee and submit an admission portfolio.

## MONTEVALLO EDUCATORS' PARTNERSHIP

Candidates employed by eligible school systems can receive a partnership scholarship toward tuition.

[montevallo.edu/mep](https://montevallo.edu/mep)

## CONTACT US

**Email:** [grad@montevallo.edu](mailto:grad@montevallo.edu)

**Phone:** 205-665-6380

**Facebook, Instagram and LinkedIn:**  
[@MontevalloGRAD](#)