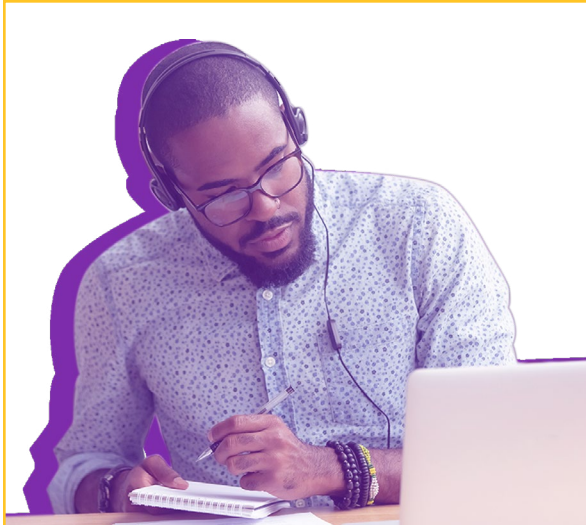


APPLIED INSTRUCTION MASTER'S



The **ONLINE Applied Instruction Master's Degree** is for those who desire advanced preparation in instructional areas across varied industries, including K-12 education and those working in other applied educational settings, in the following concentration areas: (1) STE²AM for Early Learners;* (2) Language and Literacy;* (3) Diversity, Equity and Inclusion;* (4) Educational Psychology and Research;* and (5) Exercise and Nutrition Science.

UM's Applied Instruction Program integrates research and current trends into the practical aspects of education, including instructional and program design and evaluation, stakeholder assessment and work with diverse populations.

*These Applied Instruction concentrations have been approved by the Alabama State Department of Education for advanced pay on the educator pay scale but do **NOT** result in a Class A Professional Educator Certificate.

COURSEWORK OVERVIEW

All coursework must be completed with a minimum overall GPA of 3.25.

Core Courses (18 hours required)

ED 500	Standards-Based Instruction for Diverse Learners (3)
ED 503	Public and Community Resources (3)
ED 570	Emerging Topics in Technology (3)
EDF 526	Assessment and Data Analysis for Instructional Improvement (3)
EDF 540	Applied Educational Research (3)
EDF 620	Social and Multicultural Foundations (3)

Concentration Courses (12 hours required)

Twelve hours graduate-level courses within the concentration are required.

See concentration courses on the second page.

Please note: This is not an official degree checksheet and is for general information purposes only.

ADMISSION REQUIREMENTS

- Online application available at montevallo.edu/apply
- Bachelor's degree (minimum 2.75 GPA) or graduate degree (minimum 3.0 GPA) from a regionally accredited college/university
- Professional letter of recommendation
- Statement of purpose (4-6 paragraphs discussing the relevance of the chosen concentration)

MONTEVALLO EDUCATORS' PARTNERSHIP

Candidates employed by eligible school systems can receive a partnership scholarship toward tuition. montevallo.edu/mep

CYBER TUITION RATE

This program is eligible for the Cyber Tuition Rate. Students enrolled in cyber rate-eligible programs pay the same tuition as in-state graduate students.

CONTACT US

Email: grad@montevallo.edu

Phone: 205-665-6380

Facebook, Instagram and LinkedIn:
[@MontevalloGRAD](#)

APPLIED INSTRUCTION (AI) COURSES

AI — Diversity, Equity and Inclusion

- EDF 510** Comparative Educational Systems (3)
- EDF 551** Selected Topics in Foundations of Professional Studies (3)
- EDF 580** Advanced Human Growth and Development (3)
- EDF 516** Theory & Practice of Communication Skills (3)
- EDF 531** Problems and Issues in Public Education (3)
- ED 533** English Language Learners in Today's Classroom (3)

AI — Educational Psychology and Research

- EDF 600** Applied Educational Research (3)
- EDF 551** Selected Topics in Foundations of Professional Studies (3)
- EDF 580** Advanced Human Growth and Development (3)
- EDF 516** Theory & Practice of Communication Skills (3)
- EDF 630** Advanced Educational Psychology (3)

AI — Language & Literacy

- ED 530** Multi-Sensory Strategies for Elementary Language and Literacy Development (3)
- ED 525** Assessment and Planning for Reading Instruction (3)
- ED 517** Teaching Writing in Today's Classroom (3)
- EDF 516** Theory & Practice of Communication Skills (3)
- ED 516** Emerging Literacy in the Classroom (3)
- ED 556** Improving Inst. in Elem. LA (3)

AI — STE²AM for Early Learners

- ED 575** Environmental Education for ECE/Elementary Teachers (3)
- ED 574** Science & Engineering for Elementary and ECE (3)
- ED 514** Creative Arts Integration in the Elementary Classroom (3)
- ED 532** Design Thinking and Technology in the Elementary Classroom (3)
- ED 557** Multi-sensory Approaches for Elementary and ECE Mathematics Instruction (3)

AI — Exercise and Nutrition Science

- EXNS 510** Advanced Sports Nutrition (3)
- EXNS 566** Community Nutrition II Supervised Practice (3)
- EXNS 568** Foodservice Management II Supervised Practice (3)
- EXNS 570** Clinical II Supervised Practice (3)