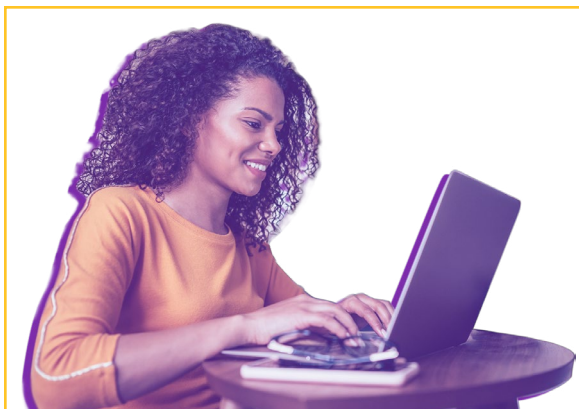


INSTRUCTIONAL LEADERSHIP CERTIFICATION



The synchronous ONLINE Reduced Hour Option (RHO) in Instructional Leadership is for those who have already earned a Class A certification and wish to obtain the credential required to hold administrative positions in P-12 educational settings.

UM's RHO Program provides the candidate opportunities to explore topics in school operation, state/national school law, finance, personnel management and supervision of curriculum and instruction.

The RHO in Instructional Leadership (grades P-12) yields an add-on to a current Class A professional educator certificate.

COURSEWORK OVERVIEW

All coursework must be completed with a minimum overall GPA of 3.25.

SPED 507 is required if not previously completed

Special Education/Diversity Courses (up to 3 hours required)

ED 584 Poverty in Rural and Urban Schools (1)^

Instructional Leadership Core (15 hours required)

EDL 593 Building Capacity for Leadership, Mentoring, & Instructional Support (3)

EDL 594 Foundations of Curriculum & Instructional Design (3)

EDL 595 PR, Community Resources, and Ethics (3)

EDL 596 Fiscal and Non-Fiscal Resources for Instruction (3)

EDL 597 School Law & Human Resource Development (3)

Residency (3 hours required)

EDL 599 Residency and Capstone Seminar (3)

^If diversity course requirement was not previously met at the Master's level.

Please note: This is not an official degree checklist and is for general information purposes only.

DUAL ENROLLMENT

Applicants to the RHO Program are eligible to dually enroll in either the Instructional Technology Ed.S. or the Curriculum and Teacher Development Ed.S. This will allow students to finish both programs simultaneously. Candidates must meet the admission requirements for both degree programs to apply for the dual enrollment option.



ADMISSION REQUIREMENTS

- Online application at montevallo.edu/apply
- Graduate degree (minimum 3.0 GPA) from a regionally accredited college/university
- Alabama Class A professional educator's certificate in a teaching field or in another area of instructional support
- Minimum of three years of full-time education experience at the P-12 level, including at least one year of full-time P-12 teaching experience
- Admissions portfolio and interview evaluated jointly by LEA personnel and University faculty

MONTEVALLO EDUCATORS' PARTNERSHIP

Candidates employed by eligible school systems can receive a scholarship of up to \$110 per credit hour toward tuition for all program coursework.

CONTACT US

Email: grad@montevallo.edu

Phone: 205-665-6380

Facebook, Instagram, LinkedIn & X:
[@MontevalloGRAD](#)