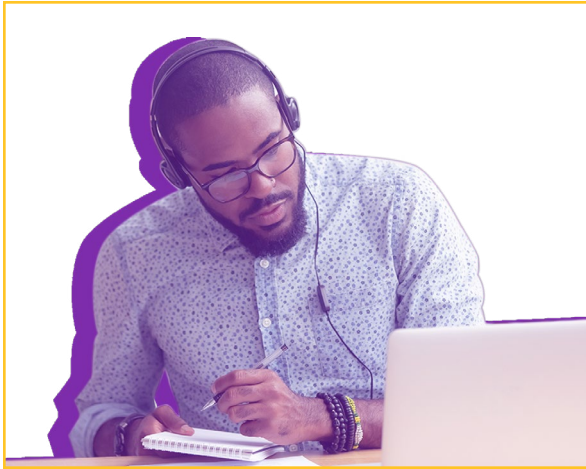


PROFESSIONAL EDUCATOR MASTER'S (PEM)



The **ONLINE Professional Educator Master's** is for those who have earned a Class B certification in one of the following areas: art, biology, elementary education, English/language arts, family and consumer science (FCS), general science, history, mathematics or social science.

UM's PEM Program integrates research and current trends into the practical aspects of teaching with alignment to National Board Standards that help enrich the pursuit of National Board Certification.

The Professional Educator Master's program leads to advanced (Class A) professional educator certification.

COURSEWORK OVERVIEW

All coursework must be completed with a minimum overall GPA of 3.25.

SPED 507 required if not previously completed.

Foundations & Support Courses (6 hours required)

- ED 529** Survey of Instructional Tech. for Engaged Learning (3)
- EDF 526** Assessment and Data Analysis for Instructional Improvement (3)
- EDF 540** Applied Educational Research (3)

Core Courses (9 hours required)

- ED 500** Professional Standards in Education (1)
- ED 503** Public & Community Relations (3)
- ED 504** Innovative Instructional Design (3)
- ED 506** Reaching Every Learner (2)

Teaching Field Courses (12 hours required)*

Twelve hours of 500-level courses in the teaching field/discipline

*Students seeking certification in the "broad fields" of English/language arts, social science and general science must have combination of content courses (e.g., 3 HIST & 1 POS; 3 ENG & 1 THEA; 3 BIO & 1 CHEM).

Please note: This is not an official degree checksheet and is for general information purposes only.

ADMISSION REQUIREMENTS

- Online application at montevallo.edu/apply
- Bachelor's degree (minimum 2.75 GPA) or graduate degree (minimum 3.0 GPA) from a regionally accredited college/university
- Alabama Class B professional educator's certificate in the same teaching field(s) in which Class A certification is sought

MONTEVALLO EDUCATORS' PARTNERSHIP

Candidates employed by eligible school systems can receive a scholarship of up to \$110 per credit hour toward tuition for all program coursework.

CONTACT US

Email: grad@montevallo.edu

Phone: 205-665-6380

Facebook & Twitter: @MontevalloGRAD