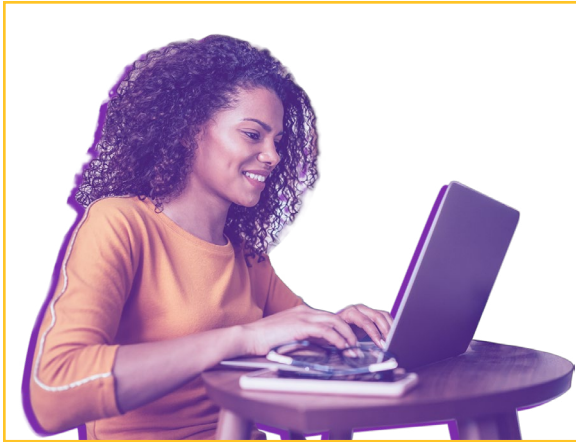


INSTRUCTIONAL LEADERSHIP MASTER'S



The **ONLINE Master's Program in Instructional Leadership** is for those who have earned a Class B professional educator's certification and wish to obtain the certification required to hold administrative positions in P-12 educational settings.

UM's Master's in Instructional Leadership provides the candidate opportunities to learn about research and current trends in school operation, state/national school law, finance and regulation, personnel management, staff development and curriculum/instructional supervision.

A Master's in Instructional Leadership leads to advanced (Class A) professional educator certification (grades P-12).

COURSEWORK OVERVIEW

All coursework must be completed with a minimum overall GPA of 3.25.

SPED 507 required if not previously completed.

Foundations & Support Courses (12 hours required)

- ED 506** Reaching Every Learner (2)
- ED 584** Poverty in Rural and Urban Schools (1)
- EDF 526** Assessment and Data Analysis for Instructional Improvement (3)
- EDF 540** Applied Educational Research (3)
- EDL 577** Technology for School Leaders (3)

Instructional Leadership Core (15 hours required)

- EDL 593** Building Capacity for Leadership, Mentoring, & Instructional Support (3)
- EDL 594** Foundations of Curriculum & Instructional Design (3)
- EDL 595** PR, Community Resources, and Ethics (3)
- EDL 596** Fiscal and Non-Fiscal Resources for Instruction (3)
- EDL 597** School Law & Human Resource Development (3)

Residency (3 hours required)

- EDL 599** Residency and Capstone Seminar (3)

Please note: This is not an official degree checksheet and is for general information purposes only.

ADMISSION REQUIREMENTS

- Online application at montevallo.edu/apply
- Bachelor's degree (minimum 2.75 GPA) or graduate degree (minimum 3.0 GPA) from a regionally accredited college/university
- Alabama Class B professional educator's certificate in a teaching field or in another area of instructional support
- Minimum of three years of full-time education experience at the P-12 level, including at least one year of full-time P-12 teaching experience
- Admissions portfolio and interview evaluated jointly by LEA personnel and University faculty

MONTEVALLO EDUCATORS' PARTNERSHIP

Candidates employed by eligible school systems can receive a scholarship of up to \$110 per credit hour toward tuition for all program coursework.

CONTACT US

Email: grad@montevallo.edu

Phone: 205-665-6380

Facebook & Twitter: @MontevalloGRAD