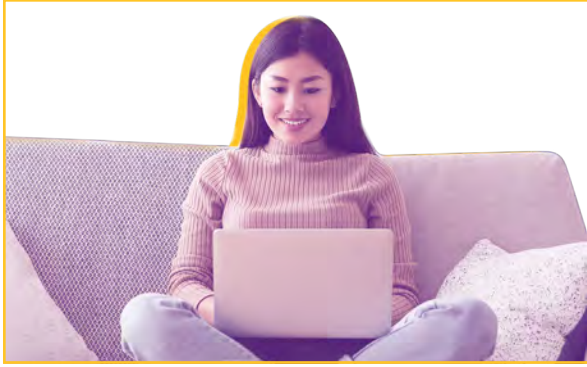


CURRICULUM AND TEACHER DEVELOPMENT EDUCATIONAL SPECIALIST



The **ONLINE Educational Specialist Program in Curriculum and Teacher Development** is for educators in grades P-12 who have earned a master's degree or higher in a related field.

UM's Curriculum and Teacher Development program is designed to equip and empower teachers to assume more active roles in school improvement and effective collaboration, while providing them the opportunity to increase instructional expertise, foster excellence in teaching and learning, advocate for students and communities and engage in educational research.

COURSEWORK OVERVIEW

All coursework must be completed with a minimum overall GPA of 3.5.

SPED 507 required if not previously completed.

Core Courses (15 hours required)	
EDL 690	Teacher Leadership for the 21st Century (3)
EDL 606	Leading Learning through Mentoring and Professional Development (3)
EDL 645	Data-Driven Models for Curriculum Development (3)
EDL 648	Leadership for Educational Equity and Social Justice (3)
EDL 612	Strengthening Community Relations through Restorative Leadership (3)
Required Support Course (3 hours required)	
ED 629	Survey of Instructional Technology Leadership (3)
Action Research Courses (6 hours required)	
EDL 691	Research and Planning for School Improvement (3)
EDL 692	Implementation and Evaluation of School Improvement (3)
Electives (6 hours required)	
Two advisor-approved 600-level electives	

Please note: This is not an official degree checksheet and is for general information purposes only.

DUAL ENROLLMENT

Candidates are eligible for dual enrollment in the Instructional Leadership Certification program (Reduced Hour Option — RHO). Candidates would count 6 hours of their coursework toward both programs. Admission requirements for both programs must be met.

ADMISSION REQUIREMENTS

- Online application at montevallo.edu/apply
- Graduate degree (minimum 3.0 GPA) from a regionally accredited college/university
- Minimum of three years of full-time P-12 teaching experience
- Admissions portfolio

MONTEVALLO EDUCATORS' PARTNERSHIP

Candidates employed by eligible school systems can receive a scholarship of up to \$110 per credit hour toward tuition for all program coursework.

CYBER TUITION RATE

This program is eligible for the cyber tuition rate. Students enrolled in cyber rate-eligible programs pay the same tuition as in-state graduate students.

CONTACT US

Email: grad@montevallo.edu

Phone: 205-665-6380

Facebook & Twitter: @MontevalloGRAD