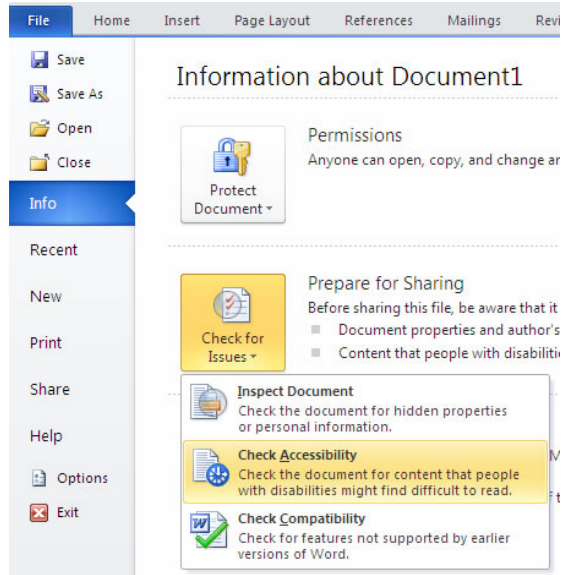


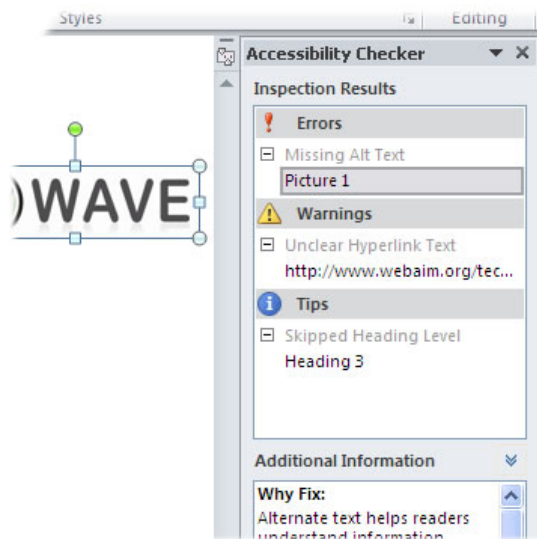
Microsoft Word- Accessibility Checker

Word 2010 includes a new accessibility checker that allows you to check for accessibility problems. This is an excellent resource and one of the best accessibility features to come along in a long time. The accessibility checker makes it much easier to identify and repair accessibility issues. This is an excellent resource.

To run the accessibility checker, select **File > Info > Check for Issues > Check Accessibility**.



This will start the accessibility checker.



The checker presents accessibility errors (e.g., images with no alt text), warnings (e.g., unclear link text) and tips (e.g., skipping from a first level heading to a third level heading). Feedback about the importance of each item, as well as tips on how to repair it, are included. Selecting an item in the report will select the corresponding item in the document.