



Institutional

Fact Book

University of
Montevallo

Alabama's Public
Liberal Arts
University

2006 - 2007

MISSION STATEMENT

The mission of the University of Montevallo, unique in higher education in Alabama, is to provide to students from throughout the State an affordable, geographically accessible, "small college" public higher educational experience of high quality with a strong emphasis on undergraduate liberal studies and with professional programs supported by a broad base of arts and sciences, designed for their intellectual growth in the pursuit of meaningful employment and responsible, informed citizenship.

TABLE OF CONTENTS

I.	Fall 2006 Snapshots	
	A. Fall 2006 Snapshots	4
II.	Fall 2006 Freshman Class	
	A. Impressions of 2006 Entering Freshman Class	6
	B. Admissions Information (Applications and ACT Information)	7
	C. Origin by County	8
	D. Residency Profile	8
	E. Size 2000 - 2006	9
	F. Ethnic Composition 2002-2006	10
	G. Gender Composition 2002-2006	10
III.	Enrollment	
	A. Undergraduate Headcount 2002-2006	11
	B. Undergraduate by Status (full and part-time)	12
	C. Undergraduate Majors	13
	D. Graduate Majors	15
	E. Undergraduate and Graduate Enrollment by College	18
	F. Graduate Enrollment by Program 2003-2006	19
	G. Credit Hours Generated by College 2003-2006	20
	H. Fall Enrollments from 1896-2006	23
IV.	Demographics	
	A. Gender of Student Population	24
	B. Ethnicity of Student Population	25
	C. Age Profile of Student Population	27
	D. Housing Information	28
	E. Origin of Student Body	30
	F. Co-curricular Activities	33
V.	Student Progress	
	A. Degrees Conferred by College Department and Major 2001-2006	34
	Faculty, Finance, and Facilities	
VI.	A. Full-time Regular Faculty by Rank, and Tenure Status	37
	B. Full-time Regular Faculty by Ethnicity and Gender	38
	C. Full-Time and Part-Time Faculty FTE by Year	39
	D. Full-time Regular Faculty by Years of Service	40
	E. Revenue by Source Fiscal Year 2005-2006	41
	F. Net Assignable and Gross Square Feet of Buildings	42

INTRODUCTION AND ACKNOWLEDGMENTS

The Office of Institutional Research, Planning and Assessment is pleased to present the 2006-2007 Fact Book. This document is primarily about UM's students, but it also contains other information about the University.

The majority of information was gathered from the student information system. The Fact Book uses self-reported data from the 2006 CIRP Assessment Summary, which is administered to new freshmen at UM. The Completions Report and the Credit Hour Report were extracted from reports prepared for other agencies (IPEDS, ACHE). Housing and Residence Life and Carmichael Library supplied specific information about their areas and personnel.

The document represents the thinking and efforts of every staff member in the Office of Institutional Research, Planning and Assessment. We hope you will find this document both informative and useful.

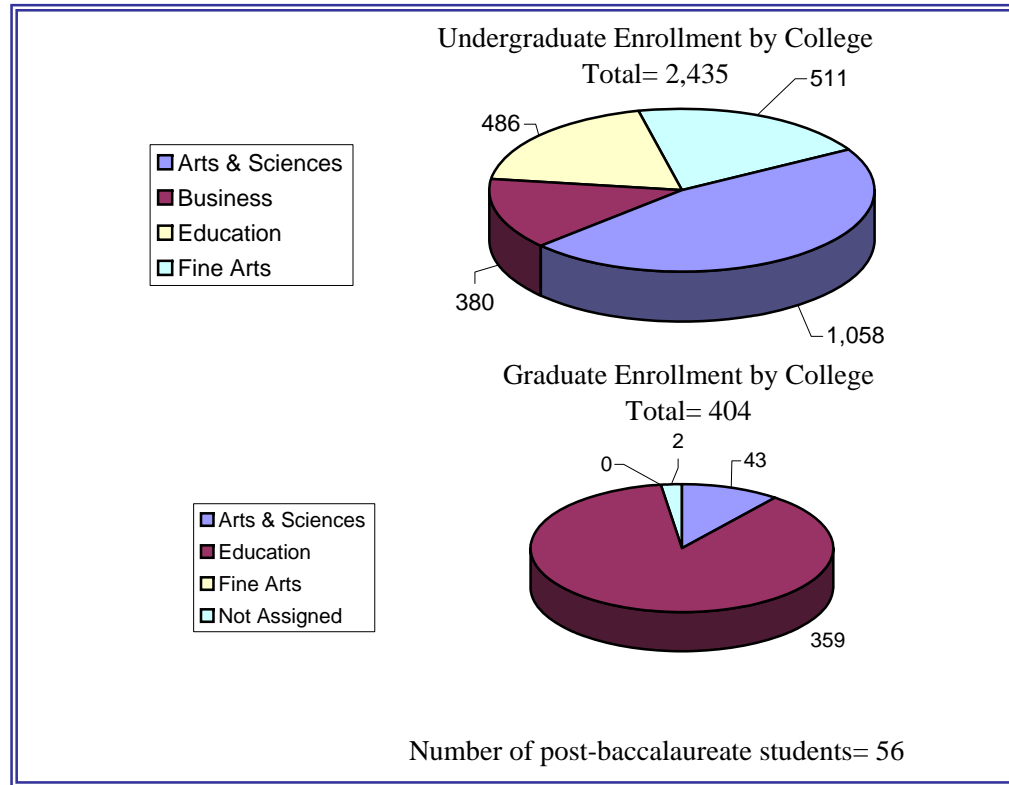
About the cover:

This year's Fact Book cover was done as a student project for Professor Collin Williams' Advanced Graphic Design:Studio class for the Spring 2008 semester. The students working on this project were Whitney Awtry, Christina Lopez and Jeremy Sanford. We are very appreciative of Professor Williams for assigning these students to our project and extremely impressed with their professional design.

Fall 2006 SNAPSHOTS

Count by Classification

Number of Students (% of Total Enrollment)		
UNDERGRADUATE		
Freshmen	737	25%
Sophomores	475	16%
Juniors	481	17%
Seniors	730	25%
Undergraduate Transients	3	0%
Temporary	5	0%
High School	4	0%
Undergraduate Total	2,435	84%
GRADUATE		
Graduates	175	6%
Non-trad. 5th Years	145	5%
Education Specialist	41	1%
Graduate Certification	41	1%
Graduate Transient	2	0%
Graduate Total	404	14%
POST-BACCALAUREATE		
Second Bachelors	22	1%
Undergraduate Certification	6	0%
Post-Graduate	28	1%
Post-Baccalaureate Total	56	2%
Total Fall Enrollment	2,895	100%
Undergraduate FTE	2,181	89%
Graduate FTE	256	11%
Total Fall FTE	2,437	100%
As of Fall 1996, the formula for calculating FTE has been changed: Undergraduate semester credit hours are summed and divided by 15, graduate semester credit hours are summed and divided by 12, the resulting full-time equivalents are totaled to obtain the university's full-time student equivalent.		



Average Class Size by Level

Course Level	Avg Size *
100	27
200	25
300	19
400	16
500	15
600	15
Overall Undergrad	23
Overall Graduate	15

* Classes with less than 5 students excluded

Enrollment Summary

	Full-Time		Part-Time		Total
	#	%	#	%	
Undergraduates	2,175	89%	260	11%	2,435
Graduates	190	47%	214	53%	404
Post-Baccalaureates	18	32%	38	68%	56
Totals	2,383	82%	512	18%	2,895

Fall 2006 Snapshots

Student Academic Profile

GPA BY COLLEGE

College of Arts and Sciences	2.95
College of Business	2.84
College of Education	3.00
College of Fine Arts	2.99

GPA BY CLASS

Freshmen	2.63
Sophomore	2.87
Junior	2.98
Senior	3.08

Number of New Freshmen

479

Faculty Profile

Total number of full-time teaching faculty	137
Total number of part-time teaching faculty	79
Total teaching faculty	216
Number of full-time females	65
Number of full-time males	72
Number of part-time females	51
Number of part-time males	28
Number of all faculty who are female	116
Number of all faculty who are male	100
Percentage of full-time regular teaching faculty with doctorate or terminal degree	82%
Student to faculty ratio *	16:1

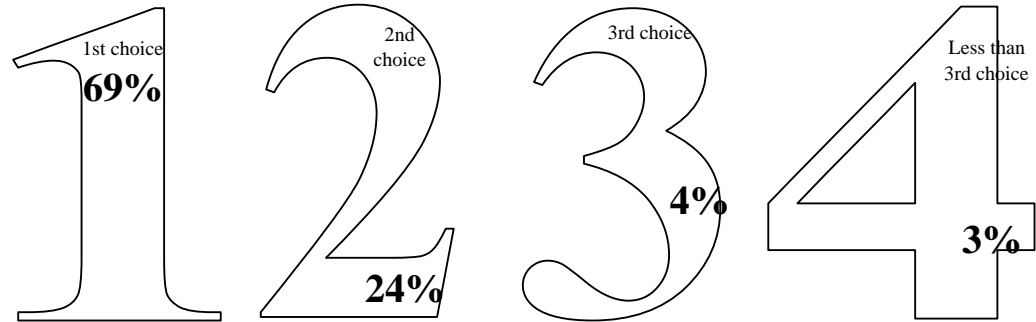
* Determined by using faculty FTE to student FTE.

Carmichael Library

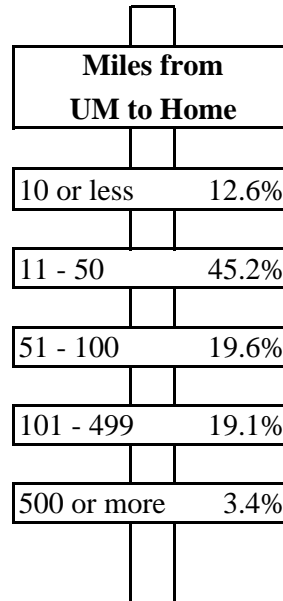
Total bound volumes	260,463
Audio/Visual Items	4,495
Total periodicals subscribed to	24,866

The Fall 2006 Freshman Class

Average High School Grades	
A	43%
B	48%
C	9%
D	0%



Reasons for Going to College	
1. Learn more about things	74.5%
2. Get Training for Specific Career	73.8%
3. Get a Better Job	65.5%
4. Make More Money	63.8%
5. Gain a General Education	63.2%
6. Prepare for Grad or Prof School	52.1%
7. Parents Wanted Me to Go	48.1%
8. Become a More Cultured Person	43.3%
9. Mentor/Role Model Encouraged Me	18.5%
10. Get Away From Home	18.0%



Reasons for Choosing UM	
1. Good Academic Reputation	54.9%
2. Size of College	51.2%
3. Offered Financial Assistance	44.1%
4. College Graduates Get Good Jobs	38.1%
5. Cost of Attending This College	37.2%
6. Good Social Reputation	24.6%
7. Wanted to Live Near Home	24.2%
8. Influence of Relatives	15.7%
9. Advice of Teacher	10.8%
10. Advice of HS Counselor	9.5%
11. Not offered Aid by First Choice	8.0%
12. Religious Affiliation/Orientation	6.5%

ADMISSIONS INFORMATION

Freshman Applications

Total applications received for Fall 2006	1,392	
Total applications offered admission for Fall 2006	1,009	72% of all applications
Total number enrolled for Fall 2006	479	47% of all offered admission

Transfer Applications

Total applications received for Fall 2006	501	
Total applications offered admission for Fall 2006	352	70% of all applications
Total number enrolled for Fall 2006	236	67% of all offered admission

ACT Test Information

Of the 479 freshmen who enrolled, 444 (93%) took the ACT test.

The mean composite ACT score for the Fall 2006 Freshman Class is 22.

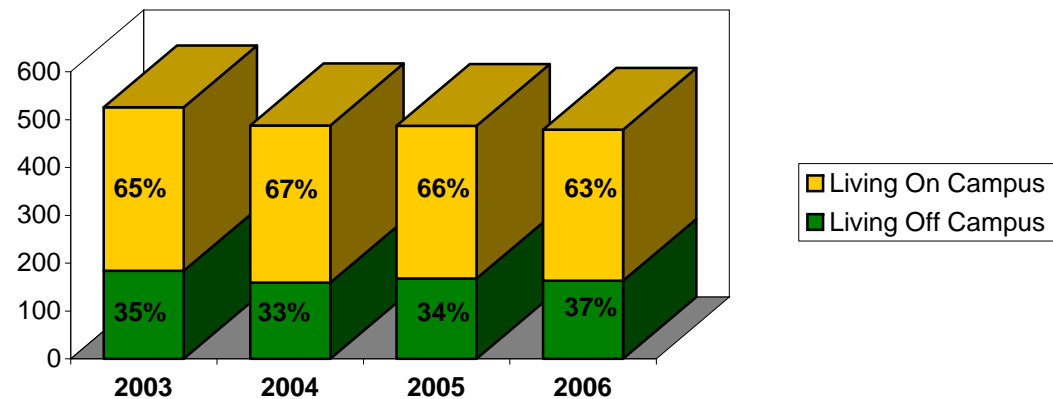
Range	English		Math		Composite	
Below 16	18	4%	40	9%	0	0%
16 - 20	144	32%	230	52%	191	43%
21 - 25	188	42%	134	30%	183	41%
26 - 29	60	14%	38	9%	61	14%
30 - 36	34	8%	2	0%	9	2%
Mean	23		20		22	

ORIGIN BY COUNTY

TOP FIVE COUNTIES #/% OF FRESHMAN CLASS

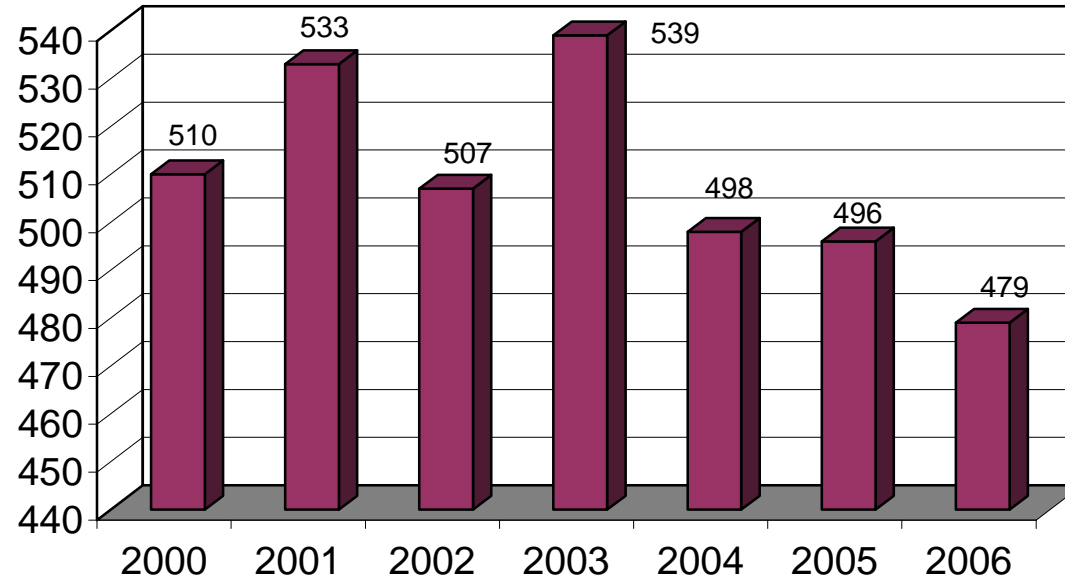
	2003		2004		2005		2006	
1.	Jefferson	177 26%	Jefferson	141 26%	Shelby	169 34%	Shelby	129 26%
2.	Shelby	160 25%	Shelby	132 24%	Jefferson	139 28%	Jefferson	117 23%
3.	Chilton	31 6%	Chilton	25 5%	Chilton	26 5%	Chilton	23 5%
4.	Madison	23 4%	Madison	20 4%	Madison	23 5%	Madison	21 4%
5.	Baldwin	12 2%	Baldwin	8 1%	Baldwin	11 2%	Bibb	9 2%

RESIDENCY PROFILE

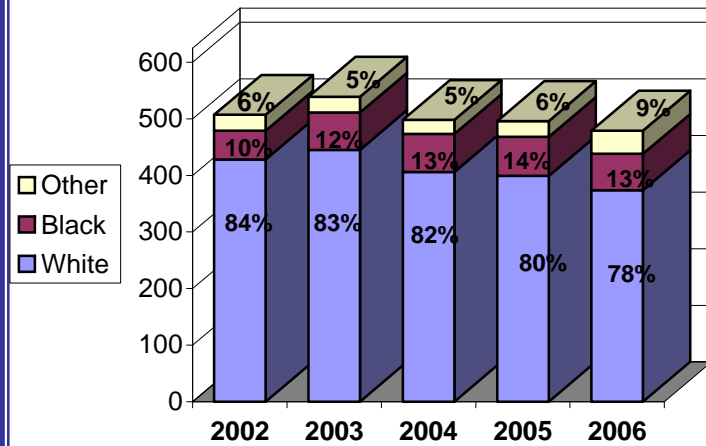


Freshman Class Size

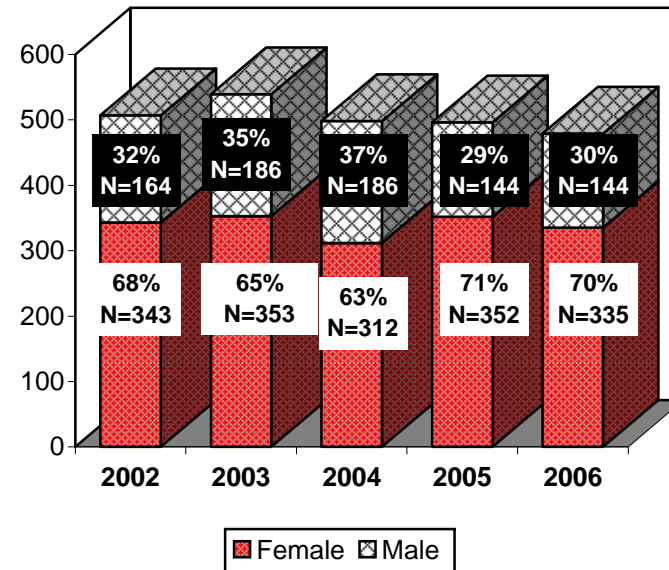
A Comparison



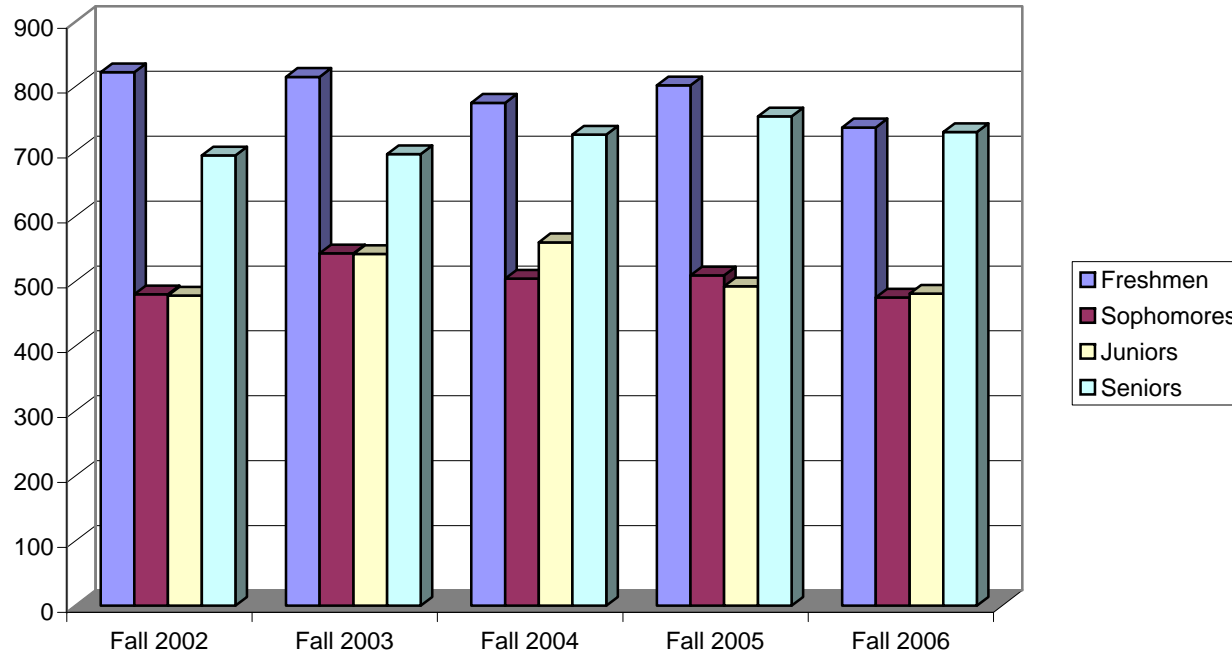
Ethnic Composition



Gender Composition



UNDERGRADUATE HEADCOUNT (FIVE YEAR COMPARISON)



	Freshmen		Sophomores		Juniors		Seniors		Other		Total
	#	%	#	%	#	%	#	%	#	%	
Fall 2002	822	34%	480	20%	478	20%	694	29%	6	0%	2,480
Fall 2003	815	33%	543	22%	542	22%	696	29%	7	0%	2,603
Fall 2004	775	32%	504	21%	560	23%	726	30%	12	0%	2,577
Fall 2005	802	33%	509	21%	492	20%	754	31%	14	1%	2,571
Fall 2006	737	30%	475	20%	481	20%	730	30%	12	0%	2,435

First-time Freshmen	
2002	507
2003	539
2004	498
2005	496
2006	479

FULL-TIME HEADCOUNT (UNDERGRADUATE)

	Freshmen		Sophomores		Juniors		Seniors		Non-degree		Total
	#	%	#	%	#	%	#	%	#	%	
Fall 2002	781	36%	439	20%	445	20%	568	26%	0	0%	2,233
Fall 2003	777	36%	500	23%	496	23%	573	26%	1	0%	2,347
Fall 2004	739	34%	466	21%	512	24%	588	27%	3	0%	2,308
Fall 2005	766	35%	480	22%	454	21%	636	29%	5	0%	2,341
Fall 2006	697	32%	438	20%	434	20%	604	28%	2	0%	2,175

PART-TIME HEADCOUNT (UNDERGRADUATE)

	Freshmen		Sophomores		Juniors		Seniors		Non-degree		Total
	#	%	#	%	#	%	#	%	#	%	
Fall 2002	41	18%	41	18%	33	14%	126	55%	6	3%	247
Fall 2003	38	17%	43	19%	46	20%	123	53%	6	3%	256
Fall 2004	36	16%	38	17%	48	21%	138	60%	9	4%	269
Fall 2005	36	16%	29	13%	38	17%	118	51%	9	4%	230
Fall 2006	40	15%	37	14%	47	18%	126	48%	10	4%	260

UNDERGRADUATE MAJORS BY DEPARTMENT AND COLLEGE

College of Arts and Sciences **FALL 2002 FALL 2003 FALL 2004 FALL 2005 FALL 2006 % CHANGE
2002-2006**

BIOLOGY, CHEMISTRY, & MATH **	223	234	236	251	267	20%
Biology	155	156	150	165	171	10%
Chemistry	26	27	28	27	36	38%
Mathematics	42	51	58	59	60	43%
COMMUNICATION SCIENCE & DISORDERS	104	113	109	104	80	-23%
Education of the Deaf and Hard of Hearing	39	38	32	28	17	-56%
Speech Language Pathology	65	75	77	76	63	-3%
ENGLISH & FOREIGN LANGUAGES ***	150	155	109	141	143	-5%
English	123	124	90	111	110	-11%
Foreign Languages	27	31	19	30	33	22%
INTERNATIONAL & INTERCULTURAL STUDIES	0	0	0	0	0	0%
International & Intercultural Studies *	0	0	0	0	0	0%
BEHAVIORAL & SOCIAL SCIENCES	384	425	401	393	410	7%
History	92	105	111	101	88	-4%
Political Science	57	58	41	46	53	-7%
Psychology	115	119	105	101	138	20%
Social Science	34	33	37	41	30	-12%
Social Work	62	76	73	75	79	27%
Sociology	24	34	34	29	22	-8%
TOTAL FOR COLLEGE OF ARTS AND SCIENCES	861	927	855	889	900	5%

Includes second majors.

** Programs being phased out*

*** Departments merged in Fall 2001*

**** Departments merged in Fall 2001*

In the Fall of 1998 the pre-professional majors were incorporated into departmental majors or minors.

UNDERGRADUATE MAJORS BY DEPARTMENT AND COLLEGE

**FALL FALL FALL FALL FALL % CHANGE
2002 2003 2004 2005 2006 2002-2006**

BUSINESS	346	373	382	406	380	10%
Accounting	67	73	62	74	75	12%
Finance	41	36	25	40	38	-7%
General Business	28	11	4	0	0	-100%
Management	125	137	152	154	137	10%
Marketing	50	53	85	93	91	82%
Management Information Systems **	35	63	54	45	39	N/A
TOTAL FOR COLLEGE OF BUSINESS	346	373	382	406	380	10%

CURRICULUM AND INSTRUCTION	318	314	261	280	282	-11%
Early Childhood Education	72	57	44	52	51	-29%
Elementary Education	246	257	217	228	231	-6%
FAMILY AND CONSUMER SCIENCES	135	128	150	158	131	-3%
Family and Consumer Sciences	135	128	150	158	131	-3%
KINESIOLOGY	92	91	103	100	100	9%
Kinesiology	91	91	103	100	100	10%
Traffic Education *	1	0	0	0	0	N/A
TOTAL FOR COLLEGE OF EDUCATION	545	533	514	538	513	-6%

Includes second majors.

** Program being phased out*

*** Program implemented in Fall 2002*

UNDERGRADUATE MAJORS BY DEPARTMENT AND COLLEGE

(continued)

COLLEGE OF FINE ARTS

	FALL 2002	FALL 2003	FALL 2004	FALL 2005	FALL 2006	% CHANGE 2002-2006
--	--------------	--------------	--------------	--------------	--------------	-----------------------

ART	195	208	195	202	211	8%
Art	195	208	195	202	211	8%
COMMUNICATION ARTS	227	254	263	258	229	1%
Mass Communication	102	114	129	129	118	16%
Communication Studies	46	56	49	47	39	-15%
Theatre	79	84	85	82	72	-9%
MUSIC	70	70	80	106	85	21%
Music	70	80	88	106	85	21%
Music Education*	N/A	N/A	N/A	N/A	N/A	N/A
TOTAL FOR COLLEGE OF FINE ARTS	492	532	538	566	525	7%
TOTAL UNDECLARED MAJORS	378	362	347	329	248	-34%

GRADUATE MAJORS BY DEPARTMENT AND COLLEGE

COLLEGE OF ARTS & SCIENCES

COMMUNICATION SCIENCE AND DISORDERS	36	36	33	34	34	-6%
Speech-Language Pathology	36	30	33	34	34	-6%
ENGLISH	5	5	10	6	9	80%
English	6	5	10	6	9	50%
TOTAL FOR COLLEGE OF ARTS AND SCIENCES	41	41	43	40	43	5%

Includes second majors.

**Music Education merged with Music in 2001*

GRADUATE MAJORS BY DEPARTMENT AND COLLEGE

COLLEGE OF EDUCATION

**FALL FALL FALL FALL FALL % CHANGE
2002 2003 2004 2005 2006 2002-2006**

COUNSELING, LEADERSHIP, AND FOUNDATIONS	139	145	149	135	161	16%
Educational Administration	76	66	65	59	91	20%
Counseling and Guidance	63	79	84	76	70	11%
CURRICULUM AND INSTRUCTION	184	252	185	172	192	4%
Early Childhood Education	5	19	14	9	6	20%
Elementary Education	70	97	74	59	64	-9%
Teacher Leadership	20	28	9	3	3	9%
P-12 Education	20	25	1	18	22	10%
Secondary Education	69	83	87	83	97	41%
UNRECORDED MAJORS	6	7	9	4	2	N/A
TOTAL FOR COLLEGE OF EDUCATION	329	404	343	311	355	8%

COLLEGE OF FINE ARTS

MUSIC	4	2	0	0	0	-100%
Music Performance *	NA	NA	NA	NA	NA	N/A
Music Education *	NA	NA	NA	NA	NA	N/A
Music *	4	2	0	0	0	N/A
TOTAL FOR COLLEGE OF FINE ARTS	4	2	0	0	0	-100%

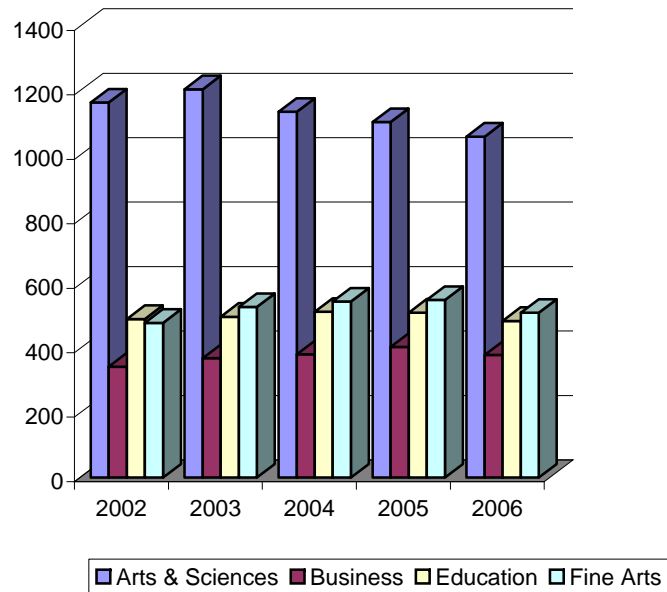
Includes second majors.

** Programs merged into new program of music*

MAJORS OF POST-BACCALAUREATE STUDENTS

DEPARTMENT	FALL 2002	FALL 2003	FALL 2004	FALL 2005	FALL 2006
Accounting -- 2nd Degree	0	0	3	1	2
Art -- 2nd Degree	3	3	2	3	4
Biology -- 2nd Degree	2	2	0	1	0
Chemistry -- 2nd Degree	0	0	0	0	1
Early Childhood Education -- Certification	0	1	1	1	0
Educational Administration--Certification	0	1	1	0	0
Elementary Education -- Certification	5	1	2	2	1
Elementary Education -- 2nd Degree	0	1	2	1	2
English -- 2nd Degree	2	1	0	1	1
Enrichment	55	35	39	32	28
Family and Consumer Sciences-- 2nd Degree	2	3	2	2	2
Foreign Languages--2nd Degree	0	1	3	3	1
General Business -- 2nd Major	1	2	0	0	0
History -- 2nd Major	1	1	0	0	0
Kinesiology--2nd Degree	0	1	1	0	1
Management	0	0	0	1	0
Management Information Systems--2nd Degree	0	1	1	0	0
Marketing -- 2nd Major	0	0	0	0	0
Mathematics -- 2nd Degree	1	2	2	2	1
Mass Communication--2nd Degree	0	1	0	3	0
Music -- 2nd Degree	0	0	1	0	0
P-12 Education -- Certification	1	3	5	1	0
Political Science -- 2nd Degree	0	0	0	1	0
Psychology -- 2nd Degree	1	0	0	2	1
Secondary Education -- 2nd Degree	0	1	0	0	0
Secondary Education -- Certification	7	7	5	11	5
Secondary Education -- Post Graduate	2	0	0	0	0
Social Sciences -- 2nd Degree	0	1	0	0	1
Social Work -- 2nd Degree	0	0	0	1	1
Speech-Language Pathology -- 2nd Degree	3	6	4	4	2
Speech-Language Pathology -- Post Graduate	0	0	0	0	0
Ed of the Deaf and Hard of Hearing -- 2nd Degree	2	2	3	4	2
Theatre -- 2nd Degree	0	0	0	0	0
Traffic Education	0	0	0	0	0
TOTAL	88	77	77	77	56

UNDERGRADUATE MAJORS BY COLLEGE*



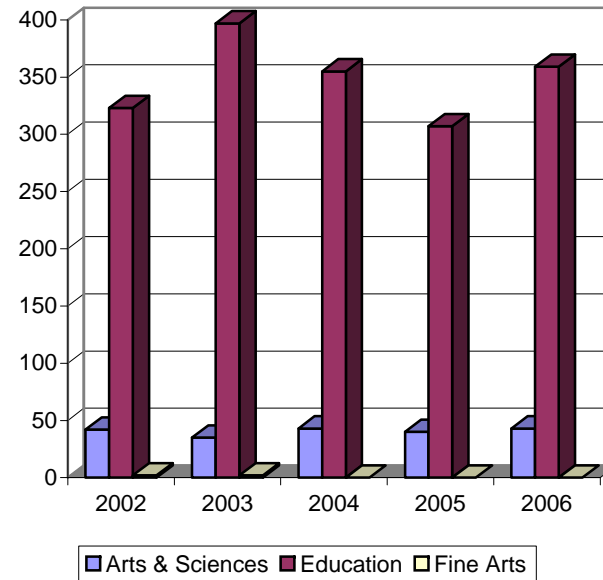
*** Arts & Sciences**

	Arts & Sciences		Business	Education	Fine Arts	Total
	#	%	#	#	#	
Fall 2002	1,164	48%	344 14%	492 20%	480 20%	2,480
Fall 2003	1,205	49%	370 15%	499 20%	529 22%	2,603
Fall 2004	1,135	47%	382 16%	514 21%	546 22%	2,577
Fall 2005	1,103	45%	405 17%	512 21%	551 23%	2,571
Fall 2006	1,058	43%	380 16%	486 20%	511 21%	2,435

* Second Majors are not included

** General Studies Majors are included in Arts & Sciences

GRADUATE MAJORS BY COLLEGE



Arts & Sciences

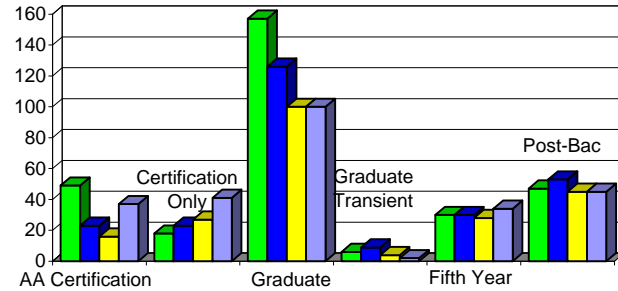
	Arts & Sciences		Education	Fine Arts	Other *	Total
	#	%	#	#	#	
Fall 2002	42	10%	323 88%	2 0%	0 0%	367
Fall 2003	35	9%	397 90%	2 0%	7 2%	441
Fall 2004	43	11%	355 87%	0 0%	9 2%	407
Fall 2005	40	10%	307 87%	0 0%	4 1%	351
Fall 2006	43	11%	359 89%	0 0%	2 0%	404

* This column represents students who are enrichment only.

GRADUATE ENROLLMENT BY PROGRAM

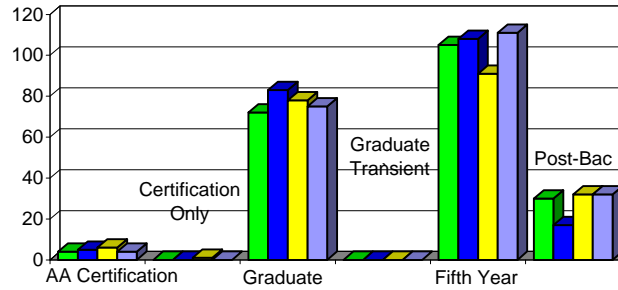
Part-Time Graduate Students

	Fall 2003		Fall 2004		Fall 2005		Fall 2006	
	#	%	#	%	#	%	#	%
AA Certification	49	19%	23	11%	16	9%	37	17%
Certification Only	18	7%	23	11%	27	15%	41	19%
Graduate	157	60%	126	60%	100	57%	100	47%
Graduate Transient	6	2%	9	4%	4	2%	2	1%
Non-Traditional 5th Year	30	12%	30	14%	28	16%	34	16%
Total Graduate	260		211		175		214	
Post-Baccalaureate	56		47		60		45	
Total	316		258		235		259	



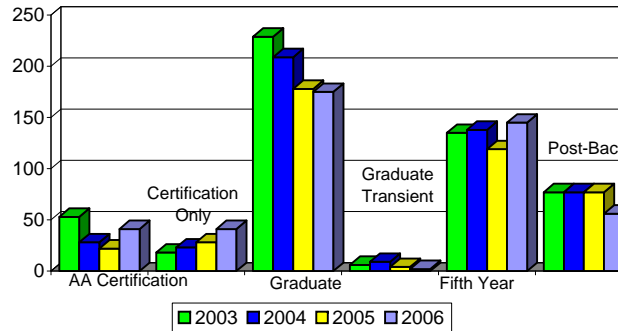
Full-Time Graduate Students

	Fall 2003		Fall 2004		Fall 2005		Fall 2006	
	#	%	#	%	#	%	#	%
AA Certification	4	2%	5	3%	6	3%	4	2%
Certification Only	0	0%	0	0%	1	1%	0	0%
Graduate	72	40%	83	42%	78	44%	75	39%
Graduate Transient	0	0%	0	0%	0	0%	0	0%
Non-Traditional 5th Year	105	58%	108	55%	91	52%	111	58%
Total Graduate	181		196		176		190	
Post-Baccalaureate	30		17		32		32	
Total	211		213		208		222	



Total Graduate Enrollment

	Fall 2003		Fall 2004		Fall 2005		Fall 2006	
	#	%	#	%	#	%	#	%
AA Certification	53	12%	28	7%	22	6%	41	10%
Certification Only	18	4%	23	6%	28	8%	41	10%
Graduate	229	52%	209	51%	178	51%	175	43%
Graduate Transient	6	1%	9	2%	4	1%	2	0%
Non-Traditional 5th Year	135	31%	138	34%	119	34%	145	36%
Total Graduate	441		407		351		404	
Post-Baccalaureate	88		77		77		56	
Total	529		484		428		460	



CREDIT HOURS GENERATED BY COLLEGE

	FALL 2003	FALL 2004	FALL 2005	FALL 2006	% CHANGE 2003-2006	% OF UM TOTAL
Biology*	1,765	1,752	1,680	1,684	-5%	5%
Chemistry*	1,231	1,144	1,114	1,255	2%	4%
Communication Science & Disorders	1,353	1,411	1,381	1,153	-15%	3%
English**	3,911	3,900	3,885	3,738	-4%	10%
Foreign Languages**	795	975	1,110	924	16%	3%
Philosophy	579	267	324	252	-56%	1%
Geology	440	436	288	272	-38%	1%
Honors	30	34	69	97	223%	0%
Mathematics*	2,631	2,562	2,758	2,519	-4%	7%
Behavioral and Social Sciences	6,576	6,627	6,273	5,919	-10%	17%
TOTAL FOR ARTS AND SCIENCES	19,311	19,108	18,882	17,813	-8%	50%

Includes undergraduate and graduate credit hours.

*Departments merged in Fall 2001.

**Departments merged in fall 2001

CREDIT HOURS GENERATED BY COLLEGE

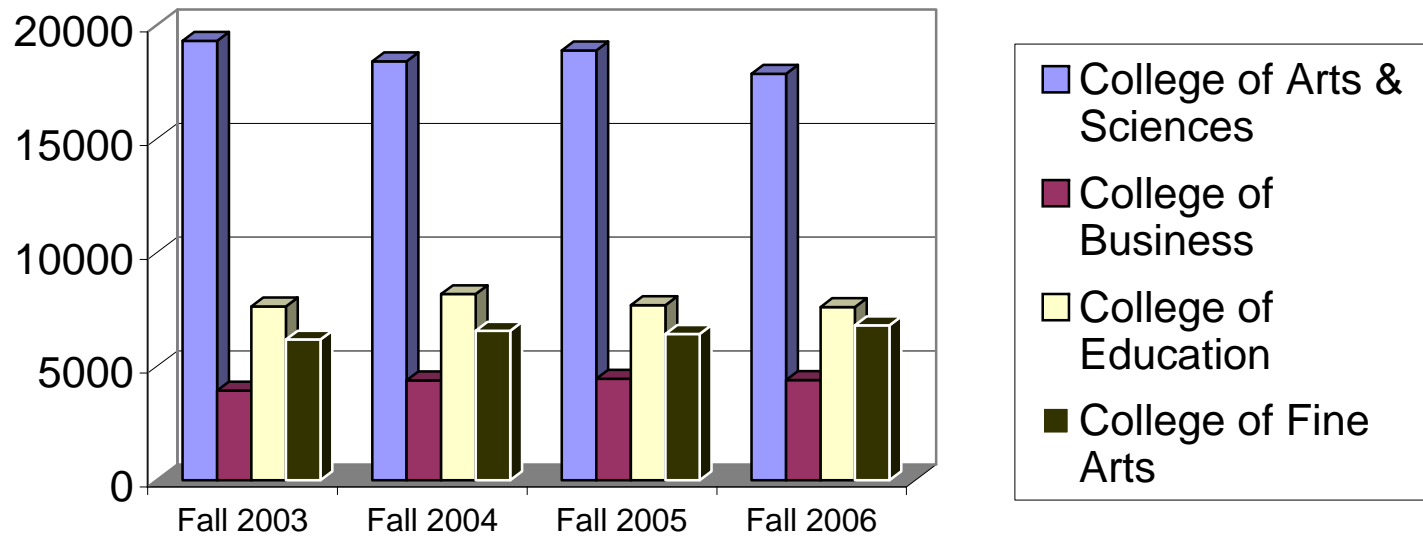
	FALL 2003	FALL 2004	FALL 2005	FALL 2006	% Change 2003-2006	% of UM Total
BUSINESS	4,386	4,464	4,407	4,152	-5%	12%
TOTAL FOR BUSINESS	4,386	4,464	4,407	4,152	-5%	12%

	FALL 2003	FALL 2004	FALL 2005	FALL 2006	% Change 2003-2006	% of UM Total
COUNSELING/LEADERSHIP/FOUNDATIONS	1,580	1,622	1,580	1,586	0%	4%
CURRICULUM & INSTRUCTION	2,711	2,347	2,185	2,277	-16%	6%
FAMILY & CONSUMER SCIENCES	1,714	1,818	1,972	1,554	-9%	4%
KINESIOLOGY	2,174	1,908	1,871	1,880	-14%	5%
TOTAL FOR EDUCATION	8,179	7,695	7,608	7,297	-11%	20%

	FALL 2003	FALL 2004	FALL 2005	FALL 2006	% Change 2003-2006	% of UM Total
ART	2,010	1,833	1,996	1,997	-1%	6%
COMMUNICATION ARTS	3,059	3,095	3,183	3,143	3%	9%
MUSIC	1,495	1,497	1,632	1,274	-15%	4%
TOTAL FOR FINE ARTS	6,564	6,425	6,811	6,414	-2%	18%

TOTAL FOR UNIVERSITY	38,440	37,692	37,708	35,676	-7%	100%
-----------------------------	---------------	---------------	---------------	---------------	------------	-------------

TOTAL CREDIT HOURS PRODUCED BY COLLEGE



Includes undergraduate and graduate credit hours.

FALL ENROLLMENT

1896 - 2006

1896	226
1897	367
1898	387
1899	400
1900	321
1901	329
1902	265
1903	470
1904	355
1905	400
1906	380
1907	319
1908	359
1909	448
1910	494
1911	505
1912	525
1913	496
1914	499
1915	501
1916	566
1917	491
1918	473
1919	491
1920	485
1921	418
1922	427

1923	657
1924	665
1925	689
1926	742
1927	814
1928	797
1929	873
1930	887
1931	817
1932	804
1933	777
1934	836
1935	822
1936	819
1937	842
1938	892
1939	902
1940	870
1941	768
1942	622
1943	652
1944	668
1945	671
1946	782
1947	751
1949	711
1950	704

1951	662
1952	612
1953	562
1954	507
1955	487
1956	645
1957	771
1958	872
1959	1,200
1960	1,200
1961	1,394
1962	1,302
1963	1,338
1964	1,464
1965	1,715
1966	1,763
1967	1,860
1968	2,000
1969	2,190
1970	2,437
1971	2,564
1972	2,691
1973	2,978
1974	3,144
1975	3,200
1976	2,984
1977	3,004

1978	2,994
1979	2,812
1980	2,593
1981	2,552
1982	2,600
1983	2,477
1984	2,782
1985	2,569
1986	2,542
1987	2,584
1988	2,719
1989	3,175
1990	3,250
1991	3,256
1992	3,254
1993	3,315
1994	3,282
1995	3,236
1996	3,206
1997	3,125
1998	3,194
1999	3,161
2000	3,028
2001	2,935
2002	2,935
2003	3,121
2004	3,061

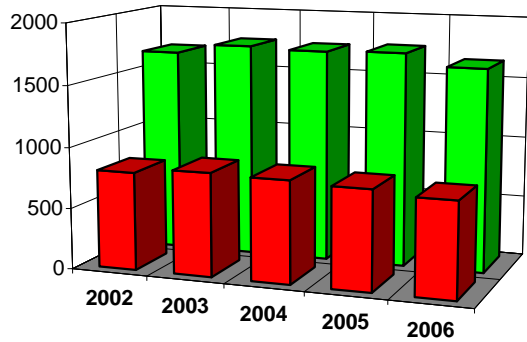
2005	2,999
2006	2,895

Includes undergraduate and graduate.

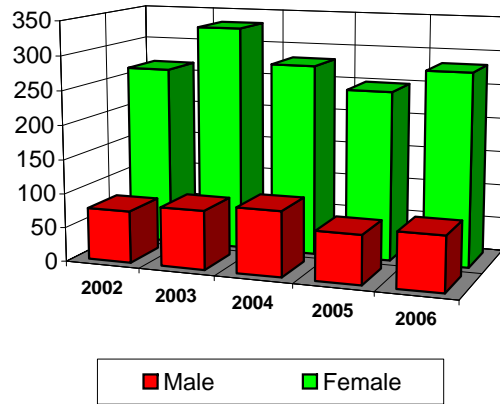
GENDER

Five Year Comparison (Degree-Seeking Students)

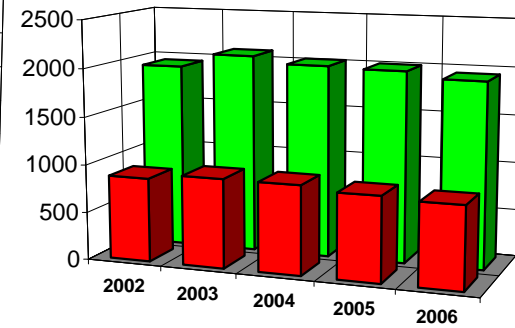
Undergraduates



Graduates



Total



■ Male ■ Female

Undergraduates

	Male		Female	
	#	%	#	%
Fall 2002	800	32%	1,674	68%
Fall 2003	844	33%	1,752	67%
Fall 2004	831	32%	1,734	68%
Fall 2005	810	32%	1,747	68%
Fall 2006	773	32%	1,650	68%

Graduates

	Male		Female	
	#	%	#	%
Fall 2002	76	22%	265	78%
Fall 2003	86	21%	331	79%
Fall 2004	95	25%	280	75%
Fall 2005	71	22%	248	78%
Fall 2006	80	22%	281	78%

Total

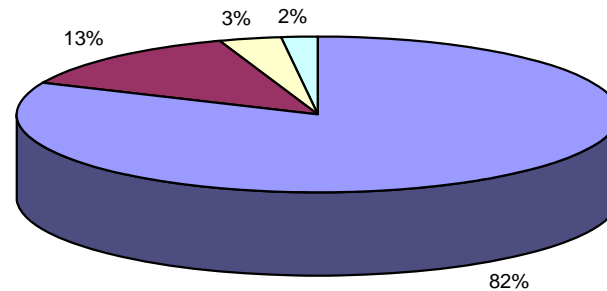
	Male		Female	
	#	%	#	%
Fall 2002	876	31%	1,939	69%
Fall 2003	930	31%	2,083	69%
Fall 2004	926	31%	2,014	69%
Fall 2005	881	31%	1,995	69%
Fall 2006	853	31%	1,931	69%

ETHNICITY OF STUDENT POPULATION

Fall 2006

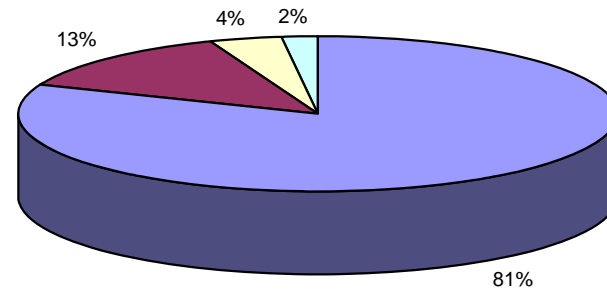
All UM Students

White	2,368	81.8%
Black	371	12.8%
Other	101	3.5%
Not Reported	55	1.9%
Total	2,895	100%



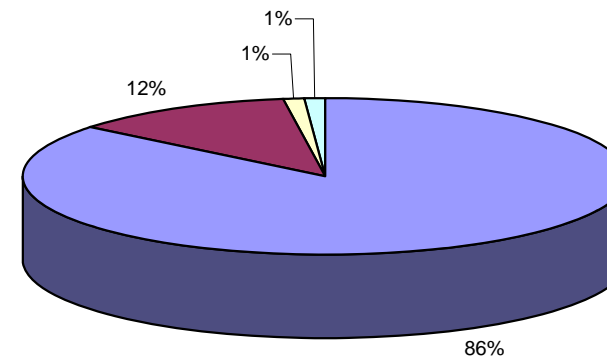
Undergraduate Students

White	1,975	81.1%
Black	316	13.0%
Other	94	3.9%
Not Reported	50	2.1%
Total	2,435	100%



Graduate Students

White	347	85.9%
Black	48	11.9%
Other	5	1.2%
Not Reported	4	1.0%
Total	404	100%

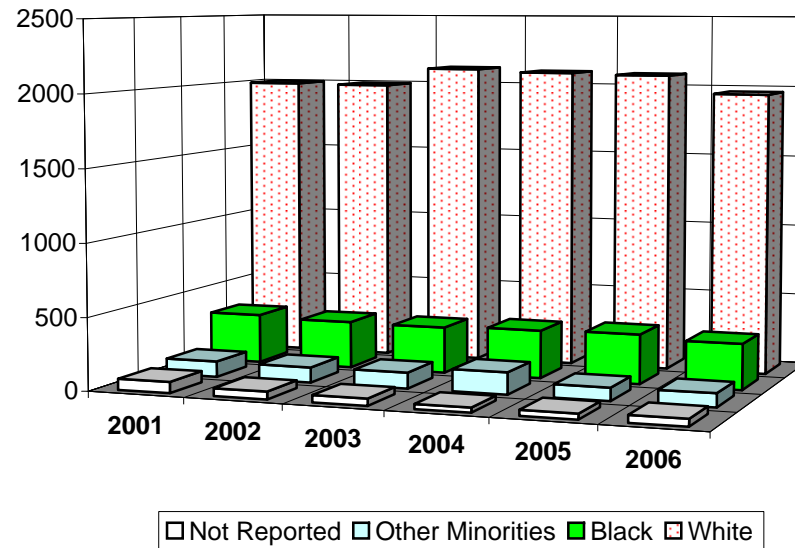


■ White
 ■ Black
 ■ Other
 ■ Not Reported

ETHNICITY PROFILE

(Six Year Comparison)

UNDERGRADUATE DEGREE-SEEKING



	Fall 2001		Fall 2002		Fall 2003		Fall 2004		Fall 2005		Fall 2006	
	#	%	#	%	#	%	#	%	#	%	#	%
White	1,996	82%	1,992	82%	2,118	87%	2,110	87%	2,087	86%	1,964	81%
Black	342	14%	325	13%	320	13%	339	14%	343	14%	315	13%
Asian/Pacific Islander	11	0%	15	1%	20	1%	22	1%	27	1%	30	1%
Hispanic	25	1%	24	1%	29	1%	40	2%	46	2%	47	2%
Am. Indian/Alaskan Native	17	1%	17	1%	16	1%	16	1%	14	1%	15	1%
Non-Resident (Alien)	55	2%	49	2%	45	2%	3	0%	2	0%	2	0%
Not Reported	76	3%	52	2%	48	2%	35	1%	38	2%	50	2%
Total	2,522		2,474		2,596		2,565		2,557		2,423	

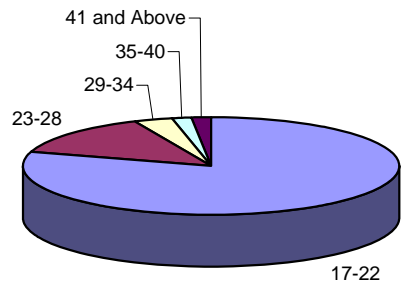
AGE PROFILE

Fall 2006

UNDERGRADUATE DEGREE-SEEKING STUDENTS

DISTRIBUTION

17-22	1,934	79%
23-28	325	13%
29-34	84	3%
35-40	39	2%
41 and Above	40	2%
Not Reported	0	0%

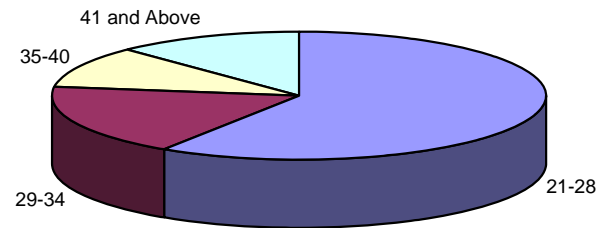


*The average undergraduate age is 21
The most frequently occurring age is 20*

GRADUATE DEGREE-SEEKING STUDENTS

DISTRIBUTION

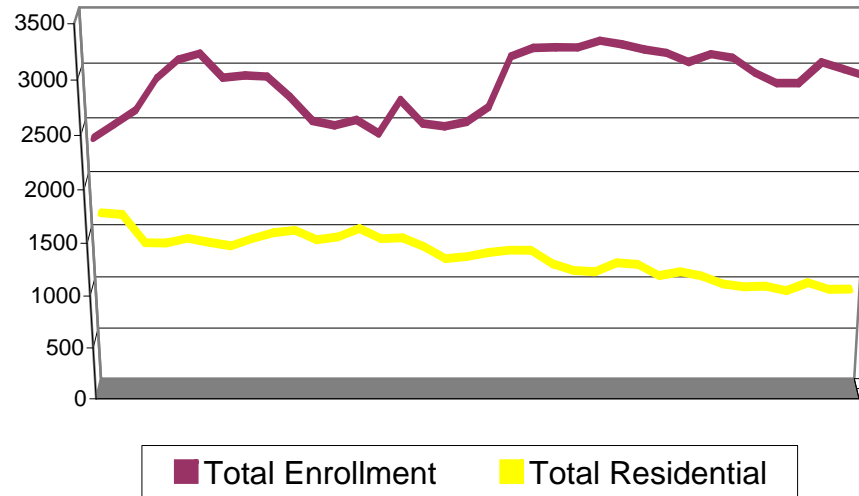
21-28	215	54%
29-34	65	19%
35-40	39	13%
41 and Above	44	14%
Not Reported	0	0%



*The average graduate student age is 31
The most frequently occurring age is 24*

HOUSING AND RESIDENCE LIFE

Total Enrollment vs. Total Residential

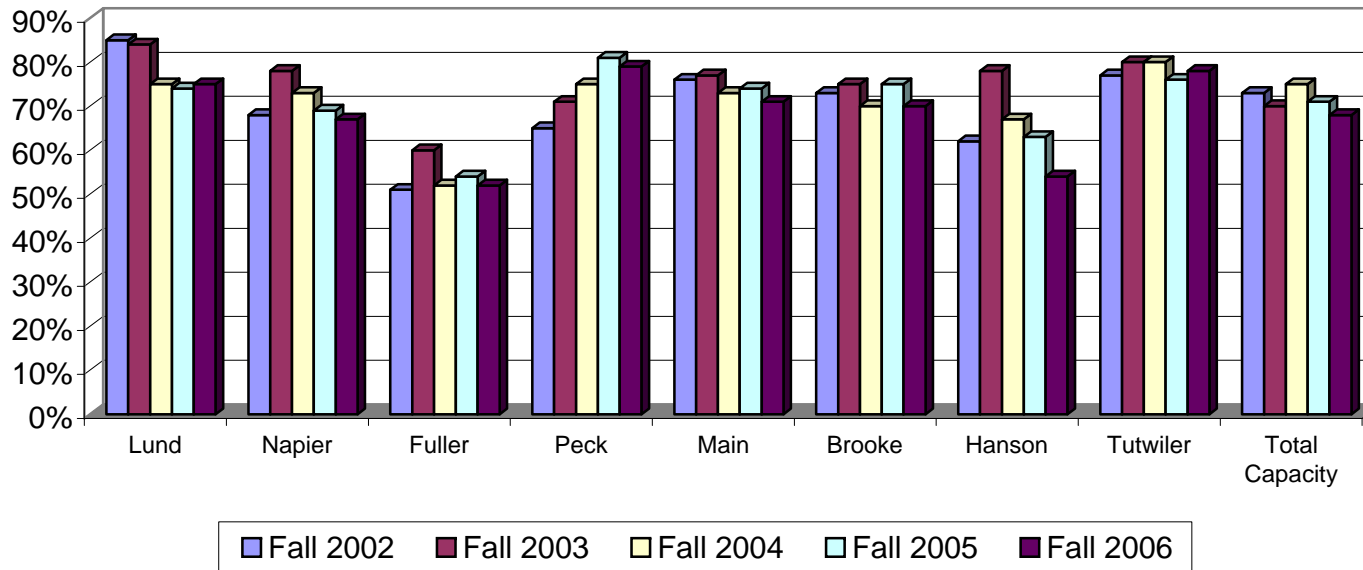


Percentage of Total Enrollment in Housing

1970	68%	1979	53%	1988	47%	1997	35%	2006	30%
1971	64%	1980	54%	1989	41%	1998	33%		
1972	51%	1981	56%	1990	40%	1999	32%		
1973	46%	1982	58%	1991	36%	2000	31%		
1974	45%	1983	57%	1992	34%	2001	33%		
1975	43%	1984	51%	1993	33%	2002	31%		
1976	45%	1985	52%	1994	36%	2003	32%		
1977	47%	1986	48%	1995	36%	2004	31%		
1978	49%	1987	48%	1996	33%	2005	31%		

HOUSING AND RESIDENCE LIFE

Percent of Capacity by Building



	Lund	Napier	Fuller	Peck	Main	Brooke	Hanson	Tutwiler	Total Capacity
Fall 2002	85%	68%	51%	65%	76%	73%	62%	77%	73%
Fall 2003	84%	78%	60%	71%	77%	75%	78%	80%	70%
Fall 2004	75%	73%	52%	75%	73%	70%	67%	80%	75%
Fall 2005	74%	69%	54%	81%	74%	75%	63%	76%	71%
Fall 2006	75%	67%	52%	79%	71%	70%	54%	78%	68%

ENROLLMENT BY STATE OF ORIGIN

(UNDERGRADUATE DEGREE-SEEKING)

	2003	2004	2005	2006
ALABAMA	2,505	2,431	2,420	2,321
ARKANSAS	1	0	1	0
ARIZONA	1	1	1	2
CALIFORNIA	0	0	3	2
COLORADO	0	1	0	2
CONNECTICUT	0	0	1	1
DELAWARE	0	0	0	0
DISTRICT OF COLUMBIA	0	0	0	0
FLORIDA	11	13	12	14
GEORGIA	7	7	11	11
IDAHO	0	0	0	0
ILLINOIS	1	2	5	5
IOWA	0	0	0	0
KANSAS	0	1	1	2
KENTUCKY	1	1	1	2
LOUISIANA	3	3	4	5
MARYLAND	0	1	2	2
MASSACHUSETTS	2	2	2	2
MICHIGAN	0	1	3	0

	2003	2004	2005	2006
MISSISSIPPI	3	8	10	8
MISSOURI	1	0	0	0
NEVADA	0	0	1	1
NEW MEXICO	0	0	0	0
NEW JERSEY	1	0	0	0
NEW YORK	4	3	2	1
NORTH CAROLINA	1	3	4	3
OHIO	0	0	3	2
OREGON	0	1	2	1
PENNSYLVANIA	1	1	0	0
SOUTH CAROLINA	1	1	2	1
TENNESSEE	13	15	12	13
TEXAS	3	5	5	7
VERMONT	0	0	0	1
VIRGINIA	1	1	3	2
WASHINGTON	0	0	1	0
WISCONSIN	0	0	1	2
WYOMING	0	0	2	2

GEOGRAPHIC PROFILE

ENROLLMENT BY COUNTY FALL 2003 TO Fall 2006*

	2003	2004	2005	2006	%		2003	2004	2005	2006	%
Autauga	17	24	22	24	1%	Houston	20	15	20	16	1%
Baldwin	39	43	49	39	2%	Jackson	6	5	6	6	0%
Barbour	7	5	3	2	0%	Jefferson	739	730	681	637	27%
Bibb	55	44	49	51	2%	Lamar	0	0	0	2	0%
Blount	27	26	25	25	1%	Lauderdale	4	2	4	4	0%
Bullock	0	0	0	0	0%	Lawrence	3	3	1	2	0%
Butler	4	4	6	5	0%	Lee	20	20	14	13	1%
Calhoun	24	24	20	15	1%	Limestone	11	9	11	8	0%
Chambers	3	3	2	2	0%	Lowndes	2	1	1	1	0%
Cherokee	3	7	6	8	0%	Macon	2	3	3	3	0%
Chilton	195	197	186	165	7%	Madison	85	81	87	105	4%
Choctaw	1	1	0	0	0%	Marengo	3	3	2	2	0%
Clarke	7	5	3	4	0%	Marion	15	13	9	8	0%
Clay	5	4	4	2	0%	Marshall	13	19	19	18	1%
Cleburne	1	1	2	3	0%	Mobile	38	32	32	29	1%
Coffee	7	7	7	5	0%	Monroe	8	4	6	5	0%
Colbert	2		4	3	0%	Montgomery	53	50	41	39	2%
Conecuh	1	1	1	0	0%	Morgan	15	19	27	25	1%
Coosa	4	4	4	3	0%	Perry	4	7	4	1	0%
Covington	5	3	4	2	0%	Pickens	1	1	1	1	0%
Crenshaw	1	0	0	1	0%	Pike	4	5	4	4	0%
Cullman	16	10	15	15	1%	Randolph	5	3	2	4	0%
Dale	12	12	15	21	1%	Russell	3	1	2	0	0%
Dallas	15	12	12	11	0%	Shelby	746	760	810	760	32%
Dekalb	13	14	16	14	1%	St. Clair	36	30	27	24	1%
Elmore	18	17	13	11	0%	Sumter	4	2	2	1	0%
Escambia	3	2	2	33	1%	Talladega	39	42	35	31	1%
Etowah	17	17	17	13	1%	Tallapoosa	30	28	29	31	1%
Fayette	2	0	1	1	0%	Tuscaloosa	40	28	31	29	1%
Franklin	1	0	0	1	0%	Walker	19	21	17	16	1%
Geneva	5	4	3	1	0%	Washington	2	2	1	2	0%
Greene	4	1	3	2	0%	Wilcox	2	3	2	2	0%
Hale	5	5	4	3	0%	Winston	6	6	4	5	0%
Henry	2	2	1	1	0%	Unknown	0	0	3	2	0%
						Out of State	97	116	13	17	1%

* Degree-Seeking Undergraduates

ENROLLMENT BY HIGH SCHOOL

Includes Undergraduate Degree-Seeking Students From Schools With Five Or More Students at UM

Thompson High School	133	Huffman High School	14	Foley High School	6
a secondary school	119	Huntsville High School	14	Gulf Shores High School	6
Pelham High School	113	Pell City High School	14	Mortimer Jordan High School	6
Hoover High School	102	Shades Mt. Christian School	14	Murphy High School	6
Montevallo High School	63	Arab High School	12	Parker High School	6
Jemison High School	54	Spain Park High School	12	Walker High School	6
Oak Mountain High School	54	Sylacauga High School	12	Alabama Bd. of Examiners for	5
Shelby County High School	44	Oak Grove High School	11	Bessemer Academy	5
Vestavia Hills High School	39	Pleasant Grove High School	11	Booker T. Washington High School	5
Calera High School	36	Austin High School	10	Cherokee County High School	5
Bob Jones High School	32	BTW Magnet School	10	Curry High School	5
Chilton County High School	32	Daphne High School	10	Ensley Magnet High School	5
Clay-Chalkville High School	30	Locust Fork High School	10	Enterprise High School	5
Homewood High School	29	Vincent High School	10	Fairhope High School	5
John Carroll High School	29	Gardendale High School	9	Fort Payne High School	5
Ramsay High School	27	Jess Lanier High School	9	Hartselle High School	5
Hueytown High School	26	Cullman High School	8	Hillcrest High School	5
Kingwood Christian School	26	Dallas County High School	8	Isabella High School	5
Chelsea High School	25	Maplesville High School	8	Leeds High School	5
Shelby Academy	24	Oxford High School	8	Meadowview Christian School	5
Hope Christian School	23	Thorsby High School	8	Montgomery Catholic High School	5
Bibb County High School	22	Wenonah High School	8	Opelika High School	5
Hewitt Trussville High School	21	Alabama School of Fine Arts	7	Parkway Christian Academy	5
Minor High School	19	Carver High School	7	Victory Christian School	5
Prattville High School	19	Chilton Christian Academy	7		
Virgil I. Grissom High School	19	Cornerstone Christian School	7		
McAdory High School	17	Hazel Green High School	7		
Pinson Valley High School	16	Jackson-Olin High School	7		
Mountain Brook High School	15	West Blocton High School	7		
Shades Valley High School	15	Coosa Valley Academy	6		
Fairfield High School	14	Fayetteville High School	6		

CO-CURRICULAR ACTIVITIES

Clubs and Organizations

Number of registered groups and organizations	69
Number of honor societies	24

Number of fraternities on campus	7
Number of sororities on campus	8

Male Greek affiliation	22%
Female Greek affiliation	18%

Intercollegiate Athletics

UM Sports:

Men	4
Basketball, Baseball, Golf and Soccer	
Women	6
Basketball, Cross Country, Golf, Soccer, Tennis and Volleyball	

UM is a member of the NCAA Division II, Gulf South Conference

DEGREES CONFERRED

	Degree Awarded	2001 2002	2002 2003	2003 2004	2004 2005	2005 2006	Five Year Average
BIOLOGY/CHEMISTRY							
Biology	BS	17	22	11	19	31	20.0
Chemistry	BS	2	7	3	5	2	3.8
COMMUNICATION SCIENCE & DISORDERS							
Ed. of the Deaf & Hard of Hearing*	BS	9	7	10	5	10	8.2
Audiology	MS	0	0	0	0	0	0.0
Speech-Language Pathology	BS	19	17	20	19	32	21.4
	MS	14	31	19	14	15	18.6
ENGLISH							
English	BA, BS	25	25	36	15	22	24.6
	MA	1	1	5	1	6	2.8
FOREIGN LANGUAGES							
Foreign Languages	BA	6	8	10	9	7	NA
MATH & PHYSICS							
Mathematics	BA, BS	6	4	5	6	7	5.6
BEHAVIORAL & SOCIAL SCIENCES							
History	BA, BS	20	29	22	31	35	27.4
Political Science	BA, BS	11	16	14	14	11	13.2
Psychology	BA, BS	22	21	23	31	24	24.2
Social Sciences	BA, BS	21	15	10	7	10	12.6
Social Work	BA, BS	18	13	16	17	22	17.2
Sociology	BA, BS	12	9	9	13	10	10.6
Total for College of Arts and Sciences		203	225	213	206	244	218.2

* Program name changed from Teaching of the Hearing Impaired to Education of the Deaf & Hard of Hearing in Fall 2002.

DEGREES CONFERRED

(continued)

COLLEGE OF BUSINESS	Degree Awarded	2001 2002	2002 2003	2003 2004	2004 2005	2005 2006	Five Year Average
Accounting	BBA	23	9	15	15	5	13.4
Finance	BBA	14	18	15	7	8	12.4
Management	BBA	32	19	20	28	37	27.2
Mgmt Info Systems	BBA	NA	3	12	15	17	NA
Marketing	BBA	17	16	14	25	22	18.8
Total for College of Business		86	65	76	90	89	81.2

COLLEGE OF FINE ARTS	Degree Awarded	2001 2002	2002 2003	2003 2004	2004 2005	2005 2006	Five Year Average
ART	BA, BFA, BS	28	35	33	40	32	33.6
COMMUNICATION ARTS							
Mass Communication	BA, BS	22	26	19	27	26	24.0
Speech	BA, BS	6	12	15	18	20	14.2
Theatre	BA, BFA, BS	13	11	10	10	16	12.0
MUSIC							
Music, General	BA	9	8	12	14	9	10.4
	MM	1	0	0	1	1	0.6
Total for College of Fine Arts		66	81	79	100	88	82.8

DEGREES CONFERRED

(continued)

COLLEGE OF EDUCATION	Degree Awarded	2001 2002	2002 2003	2003 2004	2004 2005	2005 2006	Five Year Average
COUNSELING, LEADERSHIP, & FOUNDATIONS							
Counseling and Guidance	MED	30	14	21	25	26	23.2
Ed. Administration	MED	15	14	18	13	12	14.4
	EDS	8	7	13	16	12	11.2
CURRICULUM & INSTRUCTION							
Early Childhood Education	BA, BS	24	20	10	9	3	13.2
	MED	7	1	2	9	4	4.6
Elementary Education	BA, BS	52	29	49	39	34	40.6
	MED	29	23	40	48	27	33.4
Secondary Education	MED	43	51	44	49	43	46.0
Teacher Leadership	EDS	34	0	18	10	12	14.8
FAMILY & CONSUMER SCIENCES							
Family and Con., General	BA, BS	38	46	35	40	38	39.4
Family and Con., Other	BA, BS	0	0	0	0	0	0.0
KINESIOLOGY							
Physical Education	BS	25	28	22	21	20	23.2
Total for College of Education		305	233	272	279	231	264.0

Source: IPEDS Completions Reports. The Federal reporting period for completions is July 1 through June 30.

FULL-TIME REGULAR FACULTY BY RANK AND TENURE

Fall 2006

Department	All Ranks				Professors				Associate Professors				Assistant Professors				Instructors			
	Headcount	Tenured	On-Track	Not Eligible	# Professors	Tenured	On-Track	Not Eligible	# Assoc Prof	Tenured	On-Track	Not Eligible	# Asst Prof	Tenured	On-Track	Not Eligible	# Instructors			
University	136	37	0	0	37	33	1	0	34	7	42	2	51	0	13	1	14			
Behavioral and Social Sciences	15	7	0	0	7	6	0	0	6	0	2	0	2	0	0	0	0			
Biology, Chemistry and Mathematics	18	5	0	0	5	3	0	0	3	2	7	1	10	0	0	0	0			
Communication Science & Disorders	8	1	0	0	1	1	0	0	1	1	0	0	1	0	4	1	5			
English and Foreign Languages	15	3	0	0	3	4	0	0	4	1	7	0	8	0	0	0	0			
College of Arts and Sciences	56	16	0	0	16	14	0	0	14	4	16	1	21	0	4	1	5			
Business	14	3	0	0	3	5	0	0	5	1	4	0	5	0	1	0	1			
College of Business	14	3	0	0	3	5	0	0	5	1	4	0	5	0	1	0	1			
Counseling, Ldship & Foundations	8	2	0	0	2	3	0	0	3	0	3	0	3	0	0	0	0			
Curriculum and Instruction	9	1	0	0	1	2	1	0	3	0	3	0	3	0	2	0	2			
Family & Consumer Sciences	6	1	0	0	1	0	0	0	0	0	0	1	1	0	4	0	4			
Kinesiology	5	3	0	0	3	1	0	0	1	0	1	0	1	0	0	0	0			
College of Education	28	7	0	0	7	6	1	0	7	0	7	1	8	0	6	0	6			
Art	10	5	0	0	5	1	0	0	1	0	4	0	4	0	0	0	0			
Communication Arts	11	1	0	0	1	2	0	0	2	2	5	0	7	0	1	0	1			
Music	11	4	0	0	4	2	0	0	2	0	4	0	4	0	1	0	1			
College of Fine Arts	32	10	0	0	10	5	0	0	5	2	13	0	15	0	2	0	2			
University Library	6	1	0	0	1	3	0	0	3	0	2	0	2	0	0	0	0			

FULL-TIME REGULAR FACULTY BY ETHNICITY AND GENDER

Fall 2006

Department	White			Black			Asian			Other			All		
	Male	Female	Total	Male	Female	Total	Male	Female	Total	Male	Female	Total	Male	Female	Total
University	65	57	122	6	2	8	1	1	2	0	3	3	72	63	136
Behavioral and Social Sciences	10	4	14	1	0	1	0	0	0	0	0	0	11	4	15
Biology, Chemistry & Mathematics	10	4	14	0	1	1	1	2	3	0	0	0	11	7	18
Communication Science & Disorders	1	7	8	0	0	0	0	0	0	0	0	0	1	7	8
English & Foreign Languages	6	6	12	1	0	1	0	0	0	0	2	2	7	8	15
College of Arts and Sciences	27	21	48	2	1	3	1	2	3	0	2	2	30	26	56
Business	11	3	14	0	0	0	0	0	0	0	0	0	11	3	14
College of Business	11	3	14	0	0	0	0	0	0	0	0	0	11	3	14
Counseling, Ldship & Foundations	3	5	8	0	0	0	0	0	0	0	0	0	3	5	8
Curriculum and Instruction	2	6	8	0	1	1	0	0	0	0	0	0	2	7	9
Family & Consumer Sciences	1	5	6	0	0	0	0	0	0	0	0	0	1	5	6
Kinesiology	2	3	5	0	0	0	0	0	0	0	0	0	2	3	5
College of Education	8	19	27	0	1	1	0	0	0	0	0	0	8	20	28
Art	4	4	8	1	0	1	0	0	0	0	1	1	5	5	10
Communication Arts	8	3	11	0	0	0	0	0	0	0	0	0	8	3	11
Music	5	3	8	3	0	3	0	0	0	0	0	0	8	3	11
College of Fine Arts	17	10	27	4	0	4	0	0	0	0	1	1	21	11	32
University Library	2	4	6	0	0	0	0	0	0	0	0	0	2	4	6

FULL-TIME AND PART-TIME FACULTY FTE BY YEAR

Fall 2002 thru Fall 2006

Department	Fall 2002			Fall 2003			Fall 2004			Fall 2005			Fall 2006		
	*Full-time	**Part-time	Total FTE	*Full-time	**Part-time	Total FTE	*Full-time	**Part-time	Total FTE	*Full-time	**Part-time	Total FTE	*Full-time	**Part-time	Total FTE
University	137.00	25.27	162.27	140.00	21.72	162.72	141.00	20.18	161.18	146.00	21.84	167.84	143.50	27.21	170.71
Behavioral and Social Sciences	16.00	2.25	18.25	15.00	2.00	18.00	14.00	2.25	16.25	16.00	2.25	18.25	15.00	2.50	17.50
Biology, Chemistry, Mathematics	17.00	1.75	18.75	18.00	3.06	21.06	18.00	2.17	20.17	19.00	1.91	20.91	19.00	1.66	20.66
Communication Science & Disorder	8.00	0.00	8.00	8.00	0.00	8.00	8.00	0.00	8.00	8.00	0.00	8.00	8.00	1.50	9.50
English and Foreign Languages	18.00	3.50	21.50	17.00	3.25	20.25	17.00	3.00	20.00	18.00	3.50	21.50	17.50	3.75	21.25
College of Arts and Sciences	59.00	7.50	66.50	58.00	8.31	67.31	57.00	7.42	64.42	61.00	7.66	68.66	59.50	9.41	68.91
Business	13.00	0.50	13.50	14.00	0.00	14.00	14.00	0.00	14.00	14.00	0.50	14.50	14.00	0.50	14.50
College of Business	13.00	0.50	13.50	14.00	0.00	14.00	14.00	0.00	14.00	14.00	0.50	14.50	14.00	0.50	14.50
Counseling, Ldship & Foundations	8.00	1.00	9.00	8.00	0.50	8.50	8.00	1.75	9.75	8.00	0.50	8.50	8.00	1.75	9.75
Curriculum and Instruction	11.00	2.84	13.84	12.00	1.87	13.87	12.00	2.25	14.25	12.00	2.17	14.17	10.00	4.18	14.18
Family & Consumer Sciences	6.00	0.25	6.25	5.00	2.00	7.00	6.00	0.75	6.75	7.00	1.00	8.00	7.00	1.50	8.50
Kinesiology	5.00	6.21	11.21	5.00	3.71	8.71	5.00	2.95	7.95	5.00	3.33	8.33	5.00	3.26	8.26
College of Education	30.00	10.30	40.30	30.00	8.08	38.08	31.00	7.70	38.70	32.00	7.00	39.00	30.00	10.69	40.69
Art	8.00	1.75	9.75	10.00	0.75	10.75	11.00	1.00	12.00	11.00	1.25	12.25	12.00	0.25	12.25
Communication Arts	12.00	0.25	12.25	12.00	1.00	13.00	10.00	1.00	11.00	12.00	2.25	14.25	11.00	2.75	13.75
Music	9.00	4.97	13.97	10.00	3.58	13.58	12.00	3.06	15.06	10.00	3.18	13.18	11.00	3.61	14.61
College of Fine Arts	29.00	6.97	35.97	32.00	5.33	37.33	33.00	5.06	38.06	33.00	6.68	39.68	34.00	6.61	40.61
University Library	6.00	0.00	6.00	6.00	0.00	6.00	6.00	0.00	6.00	6.00	0.00	6.00	6.00	0.00	6.00

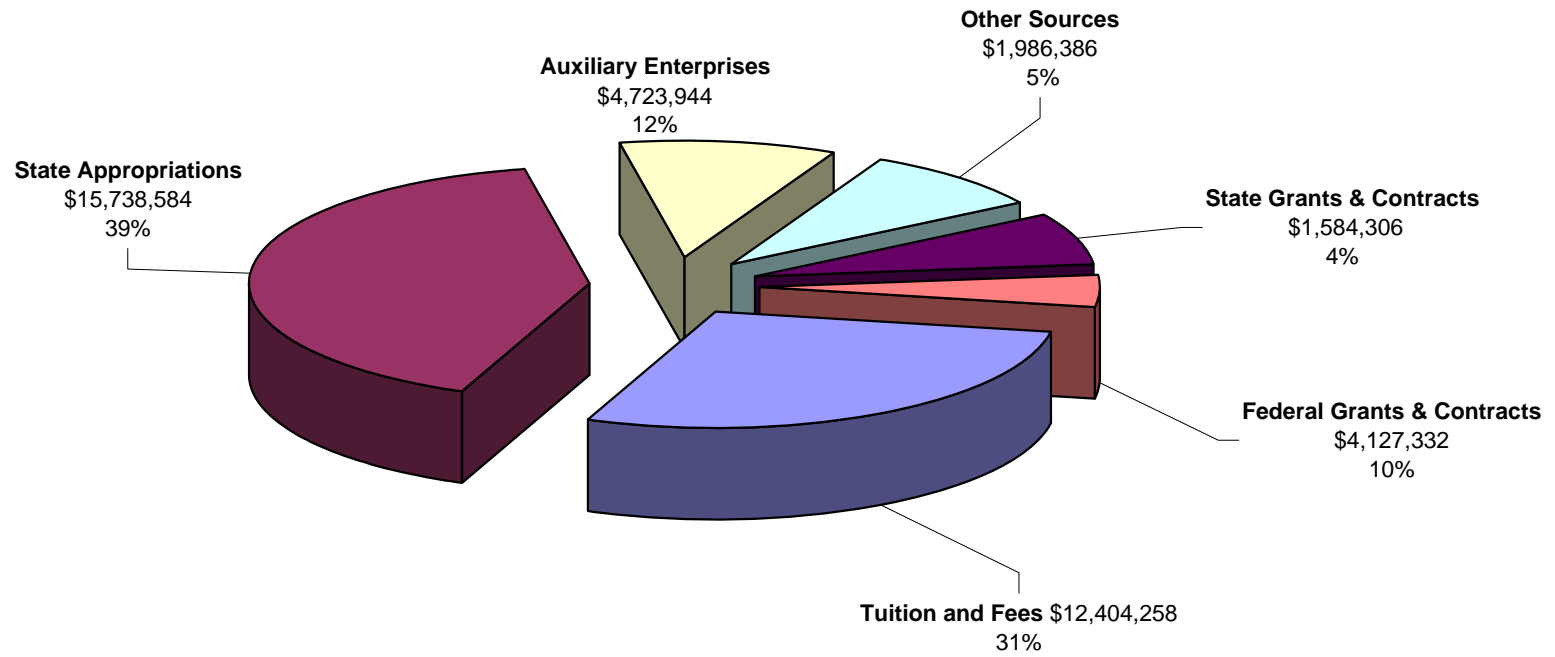
*Includes full-time adjuncts and faculty members on sabbatical. Does not include faculty members on-leave without pay.
 **Includes supplemental faculty (staff members teaching courses).

FULL-TIME REGULAR FACULTY BY YEARS OF SERVICE

Fall 2006

Department	< Than 1 Yr	1 - 4 Years	5 - 9 Years	10 - 14 Years	15 - 19 Years	20 - 24 Years	25 - 29 Years	30 or More Yrs
University	13	39	29	21	12	7	7	8
Behavioral and Social Sciences	0	1	3	6	1	0	2	2
Biology, Chemistry and Mathematics	1	6	3	2	3	1	1	1
Communication Science & Disorders	1	3	2	1	0	0	0	1
English and Foreign Languages	0	7	3	2	2	0	0	1
College of Arts and Sciences	2	17	11	11	6	1	3	5
Business	3	2	3	0	0	2	3	1
College of Business	3	2	3	0	0	2	3	1
Counseling, Ldship & Foundations	1	0	4	2	0	1	0	0
Curriculum and Instruction	4	1	3	1	0	0	0	0
Family & Consumer Sciences	2	3	0	1	0	0	0	0
Kinesiology	0	1	1	1	2	0	0	0
College of Education	7	5	8	5	2	1	0	0
Art	0	4	1	0	1	2	1	1
Communication Arts	0	5	4	1	1	0	0	0
Music	0	5	1	3	2	0	0	0
College of Fine Arts	0	14	6	4	4	2	1	1
University Library	1	1	1	1	0	1	0	1

Revenues by Source Fiscal Year 2005-2006



**NET ASSIGNABLE AND GROSS SQUARE FEET OF BUILDINGS
FALL 2006**

Building Number	Building Name	E & G NASF	Aux/Other NASF	Total NASF	Gross Square Feet
1	Bloch Hall	22,438	728	23,166	35,526
2	Calkins Hall	4,657		4,657	7,344
3	Carmichael Library	45,596		45,596	52,829
4	Comer Hall	19,039		19,039	29,700
5	Bibb Graves Hall	10,867		10,867	12,862
6	Harman Hall	35,617	625	36,242	51,782
7	Hill Hse	3,456		3,456	4,992
8	Jeter Hall	7,087		7,087	11,754
9	McCall Pool	7,614		7,614	8,747
10	Myrick Hall	23,172		23,172	31,101
11	Child Study Center	1,674		1,674	2,307
12	3-D Complex	11,994		11,994	13,360
13	Palmer Hall	19,456		19,456	30,086
15	Reynolds Hall	15,067		15,067	22,232
16	Wills Hall	17,460		17,460	28,466
17	Farmer Hall	7,949	9,912	17,861	22,832
18	Anna Irvin Hall		17,639	17,639	24,419
19	Hanson Hall		22,020	22,020	34,737
20	Tutwiler Hall		17,911	17,911	40,753
21	Napier Hall		26,270	26,270	42,560
22	Fuller Hall		24,749	24,749	42,560
23	Main Hall	10,035	48,355	58,390	110,748
24	Ramsay Hall		14,592	14,592	29,076
26	Peterson Hall		4,700	4,700	7,262
27	Lund Hall		10,161	10,161	19,689
28	Brooke Hall		21,881	21,881	41,422
29	Davis Hall	17,505		17,505	31,053
30	Morgan Hall	12,234		12,234	18,560
31	Speech & Hearing Ctr	9,550	1,526	11,076	19,289
32	Traffic Education	8,756		8,756	12,000

**NET ASSIGNABLE AND GROSS SQUARE FEET OF BUILDINGS
FALL 2006**

Building Number	Building Name	E & G NASF	Aux/Other NASF	Total NASF	Gross Square Feet
33	Scene Shop	5,113		5,113	6,248
34	Central Utilities Plt	11,535		11,535	12,148
35	King House		1,984	1,984	3,436
36	Will Lyman Hse	2,427		2,427	3,666
37	Storage Barn	4,876		4,876	5,100
38	Filter Building	339		339	381
39	Flowerhill	5,269		5,269	7,701
40	Garage Apt	756		756	1,188
41	Peterson House		3,382	3,382	3,636
42	Sims House	2,424		2,424	3,569
43	Calkins House		1,583	1,583	1,702
44	Traffic Sfty Storage	3,861		3,861	4,050
45	Pump Bldg	239		239	286
46	Tower	1,248		1,248	1,779
47	Greenhouse #1	742		742	800
48	Greenhouse #2	527		527	560
50	Student Retreat	3,099		3,099	3,844
53	Boat Storage	440		440	461
54	Chemical Storage	523		523	592
55	Biology Storage	510		510	592
56	Peck Hall		23,486	23,486	31,200
57	Physical Plant Bldg A	3,292		3,292	4,880
58	Barn Storage 7 units	6,140	922	7,062	8,340
59	Baseball Pressbox	716		716	1,040
60	Baseball Dugouts	460		460	570
61	Student Act Center	96,208	792	97,000	101,737

NET ASSIGNABLE AND GROSS SQUARE FEET OF BUILDINGS FALL 2006

Building Number	Building Name	E & G NASF	Aux/Other NASF	Total NASF	Gross Square Feet
62	Bearden House		1,246	1,246	1,326
65	Van Tuyl House		2,309	2,309	3,145
66	Golf Club House		1,240	1,240	1,610
67	Lake Gate House		1,267	1,267	1,387
68	Saylor House		2,959	2,959	4,425
70	Puryear House	1516		1,516	1,936
71	Golf Storage #1		536	536	569
72	Golf Maint. Shop		983	983	1,071
74	Golf Restroom		114	114	120
75	Golf Storage #3		1,090	1,090	1,202
78	Golf Cart Storage		3,272	3,272	3,362
89	Phy Plt Bldg C	9,279		9,279	9,600
91	Phy Plt Bldg B	12,031		12,031	12,800
96	Wood Storage Shed	4,871		4,871	4,940
98	Mass Communications	5,764		5,764	8,125
100	College Night Bldg	3,120		3,120	3,200
105	Meroney House	2,619		2,619	2,988
107	Archery Storage	140		140	152
110	Sharpe Hse		3,223	3,223	3,909
Total		501,307	268,234	769,541	1,115,421